



6/50-52 Cypress Crescent LEOPOLD, VIC



2



1



1

## Spacious and Sunny Unit in Quiet Leopold

Positioned within a peaceful tree lined neighbourhood, this house-like unit offers space, convenience and generous open plan living. Located at the rear of a six unit block, you'll be amazed by the scale and space this home has to offer.

High ceilings and a bright aspect add to the spacious interiors of this home. Easy living is focussed on the expansive open plan that allows for a large dining table and lounge zone that embraces the sunlight from the private entertaining deck and low maintenance garden. Here, a shade sail offers respite from the sun and alongside generous garden beds, planted to a range of mature succulents, the garden pathway leads to the back of the single lock up garage where there is space for trailer parking along with a water tank that is plumbed to both inside toilets. Working from home is a breeze in the user-friendly study space and entertaining is easy and effortless in the well appointed kitchen where bench space is plentiful and there's an oversized walk-in pantry along with a gas top cooker and extensive cabinetry. The nearby laundry keeps the chores hidden from living spaces and there's a

**Price:** \$495,000 - \$544,000

**Property Type:** Unit

**Land:** 289 m2

# HAYDEN

**Karen Purcell**

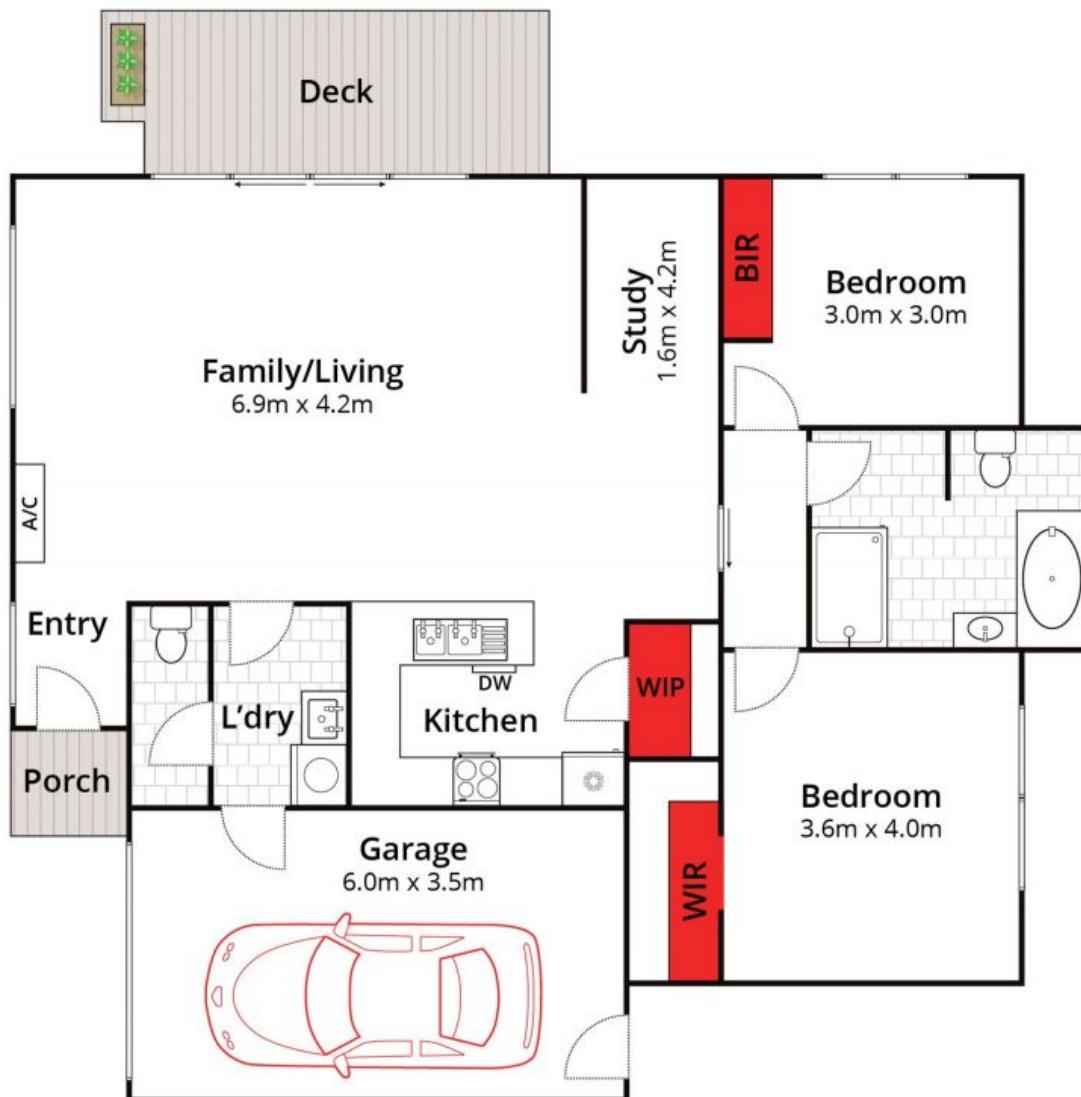
0448510143

karenp@haydenleopold.com.au

**David Pemberton**

0419874029

david@haydenleopold.com.au



Whilst [bwrn.com.au](http://bwrn.com.au) has made every attempt to ensure the accuracy of the floor plan contained here, measurements are approximate and no responsibility is taken for any error, omission, or mis-statement. This plan is for illustrative purposes only.



**6/50-52 Cypress Crescent, Leopold**

**HAYDEN**

**6/50-52 Cypress Crescent**

**LEOPOLD, VIC**