



26 Leicester Mews LEOPOLD, VIC



4



2



2

## The Perfect Family Package!

Located in a peaceful court on approx. 838m2, this cherished home is the perfect place to create family memories!

The main bedroom features a walk-in robe and en suite. Three additional bedrooms with built-in robes share close access to the main bathroom, while the laundry and separate toilet complete the layout. You'll be in absolute comfort thanks to ducted heating, refrigerated cooling, two gas wall heaters and ceiling fans.

**Price:** \$730,000 - \$770,000

**Property Type:** House

**Land:** 838 m2

# HAYDEN

**David Pemberton** **Karen Purcell**

0419874029

0448510143

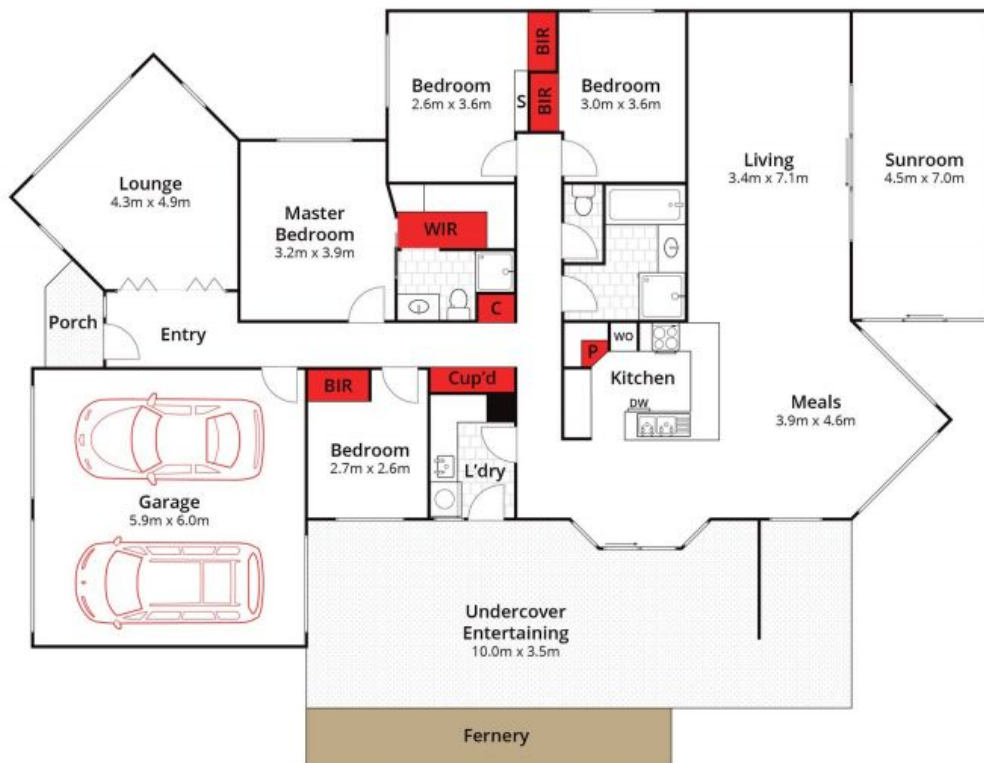
david@haydenleopold.com.au karenp@haydenleopold.com.au



(Not In Position)



(Not In Position)



Whilst [bwrn.com.au](http://bwrn.com.au) has made every attempt to ensure the accuracy of the floor plan contained here, measurements are approximate and no responsibility is taken for any error, omission, or mis-statement. This plan is for illustrative purposes only.



**26 Leicester Mews, Leopold**

**HAYDEN**

**26 Leicester Mews**

**LEOPOLD, VIC**