



26 Leicester Mews LEOPOLD, VIC



4



2



2

The Perfect Family Package!

Located in a peaceful court on approx. 838m2, this cherished home is the perfect place to create family memories!

The main bedroom features a walk-in robe and en suite. Three additional bedrooms with built-in robes share close access to the main bathroom, while the laundry and separate toilet complete the layout. You'll be in absolute comfort thanks to ducted heating, refrigerated cooling, two gas wall heaters and ceiling fans.

Price: \$730,000 - \$770,000

Property Type: House

Land: 838 m2



David Pemberton Karen Purcell

0419874029

0448510143

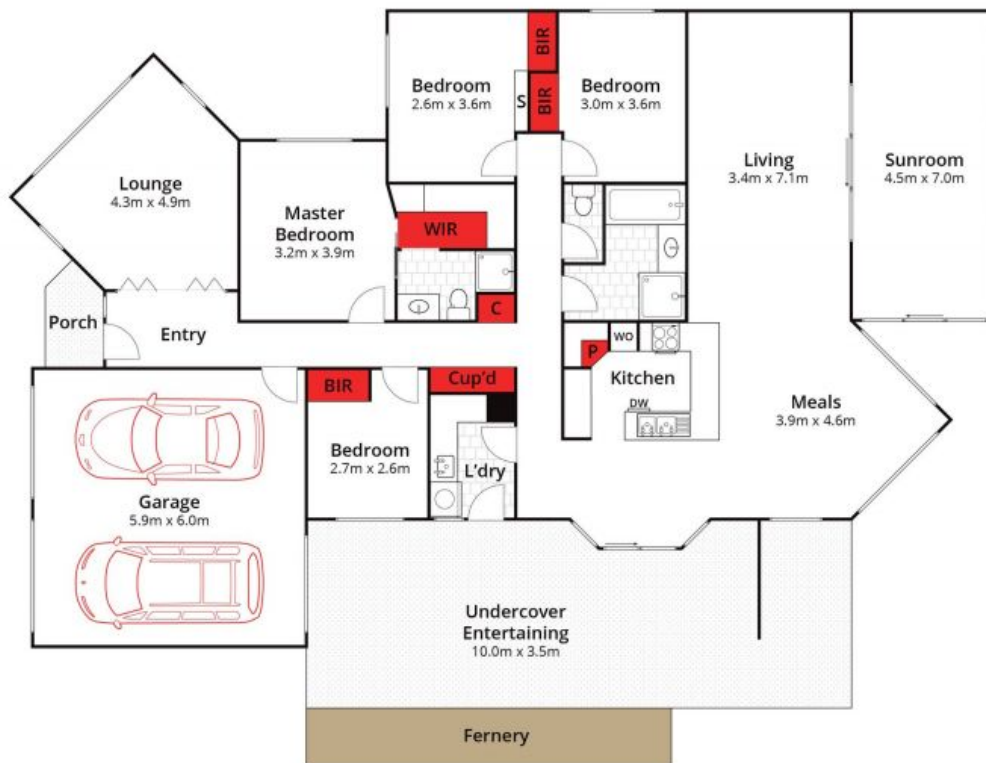
david@haydenleopold.com.au karenp@haydenleopold.com.au



(Not In Position)



(Not In Position)



Whilst bwrn.com.au has made every attempt to ensure the accuracy of the floor plan contained here, measurements are approximate and no responsibility is taken for any error, omission, or mis-statement. This plan is for illustrative purposes only.



26 Leicester Mews, Leopold

HAYDEN

26 Leicester Mews

LEOPOLD, VIC