

7 Volare Way LEOPOLD, VIC



3



2



1

## The Perfect First Home or Downsizer!

Less than five years old, this one-owner home presents an irresistible opportunity for first homebuyers, downsizers and investors alike.

When it comes to outdoor settings, this home is simply charming. The covered alfresco area features a shade blind to protect from the afternoon sun, while colourful gardens and synthetic turf enhance the secure yard. So why not sit back and admire the picturesque sunsets? Or open the back gate onto Pickworth Park for a leisurely stroll?

Tucked away in a peaceful pocket of Leopold, this home places you within walking distance to public transport, Gateway Sanctuary and the Gateway Plaza. Both Leopold Kindergarten and Leopold Primary School are a short stroll away for families, while the Ash Road shops are right at your fingertips. To top it all off, the Bellarine Highway grants easy access to

**Price:** \$590,000 - \$630,000

**Property Type:** House

**Land:** 301 m2

# HAYDEN

**Karen Purcell**

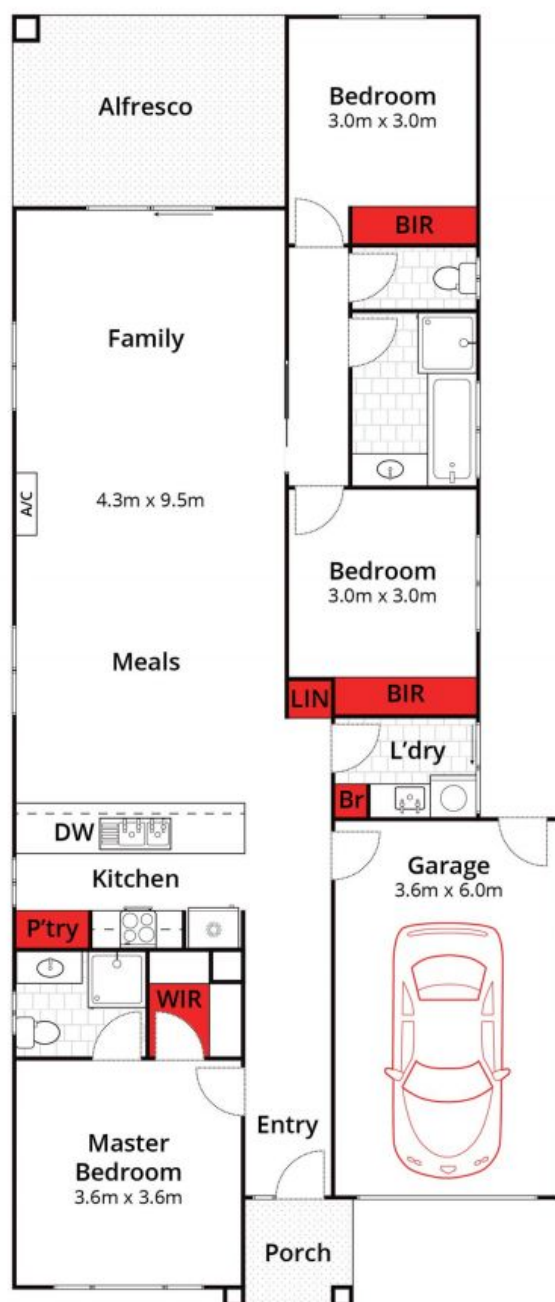
0448510143

karenp@haydenleopold.com.au

**David Pemberton**

0419874029

david@haydenleopold.com.au



Whilst [bwrn.com.au](http://bwrn.com.au) has made every attempt to ensure the accuracy of the floor plan contained here, measurements are approximate and no responsibility is taken for any error, omission, or mis-statement. This plan is for illustrative purposes only.



**7 Volare Way, Leopold**

**HAYDEN**

**7 Volare Way**

**LEOPOLD, VIC**