

18 High Street MOOLAP, VIC



2



1

Potential Plus

Your rural lifestyle awaits. This delightful parcel of land is approximately 4,380m² (1.08 acres), with a small but liveable 2 bedroom house and good shedding. With frontage to 2 bitumen roads, there is an opportunity to build the home of your dreams with room for sheds, tennis court and pool (STCA) in this quiet but convenient location. Only minutes to quality shopping centres, schools, Corio Bay and the city centre, opportunities like this are often sought but hard to find.

Low Density Residential Zone (LDRZ)

Price: \$1,100,000 - \$1,200,000

Property Type: House

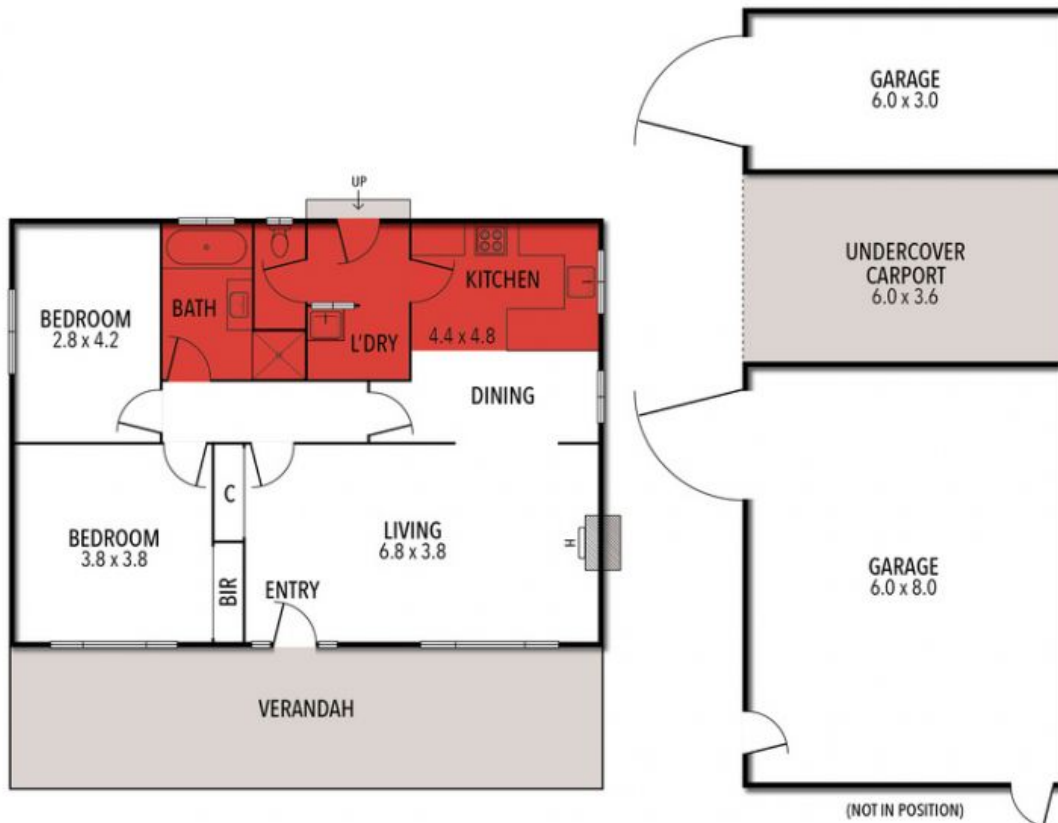
Land: 4380 m2

HAYDEN

Laurie McGovan

0412167677

laurie@haydengeelong.com.au



THE ABOVE PLAN IS AN ARTIST'S IMPRESSION ONLY, IT INCLUDES ELEMENTS THAT ARE FOR DISPLAY PURPOSES ONLY AND MAY NOT BE TO SCALE.
LANDSCAPING SHOWN IS INDICATIVE ONLY. DIMENSIONS ARE APPROXIMATE.