



6 Grange Court LEOPOLD, VIC



4



2



2

Peaceful Parkside Location!

Have you been searching for the perfect place to raise a family? Located footsteps away from the Northview Reserve playground and Bellarine Rail Trail, this home will be at the top of your list!

Price: \$590,000 - \$645,000

Property Type: House

Land: 615 m2

HAYDEN

Karen Purcell

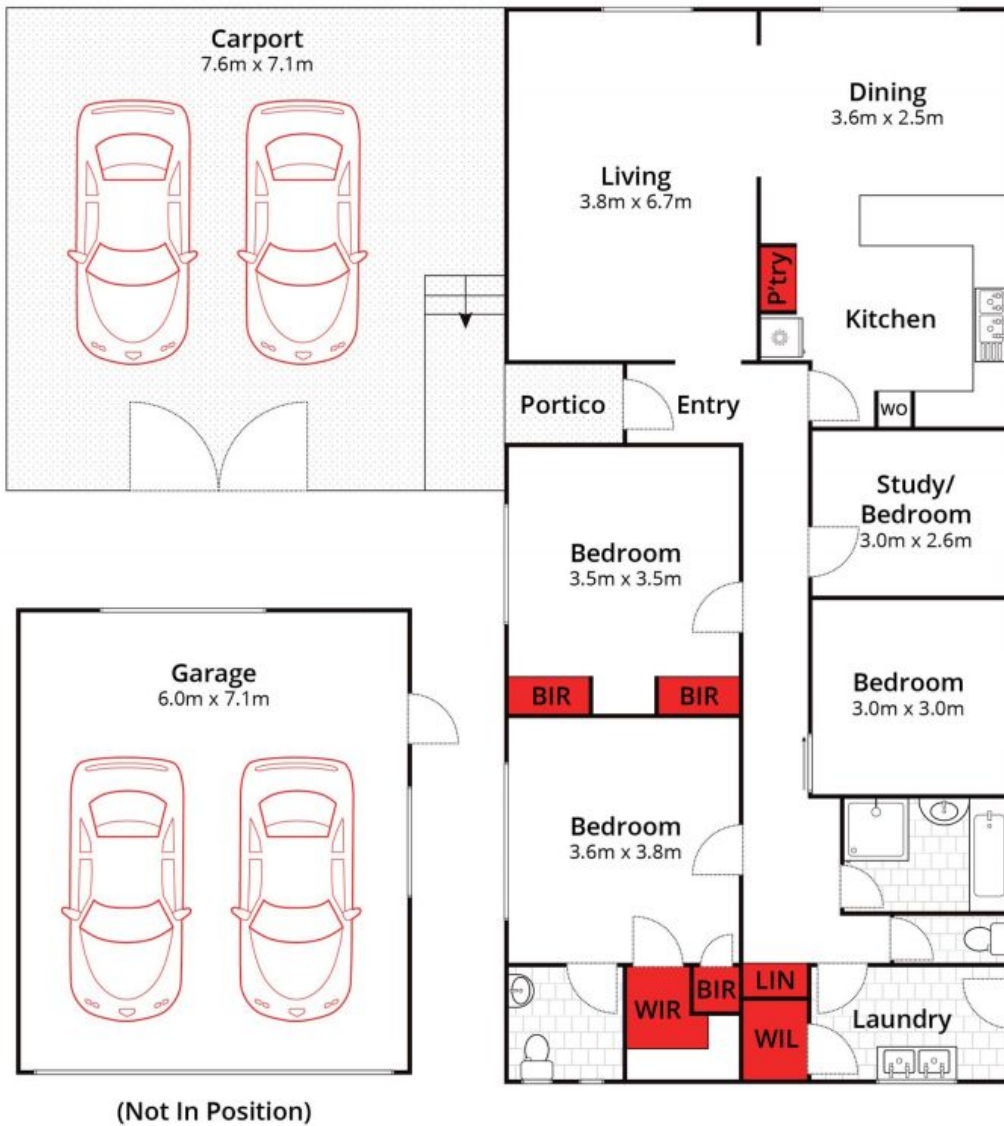
0448510143

karenp@haydenleopold.com.au

David Pemberton

0419874029

david@haydenleopold.com.au



Whilst bwrn.com.au has made every attempt to ensure the accuracy of the floor plan contained here, measurements are approximate and no responsibility is taken for any error, omission, or mis-statement. This plan is for illustrative purposes only.



6 Grange Court, Leopold

HAYDEN

6 Grange Court

LEOPOLD, VIC