



5 Hyatt Court GROVEDALE, VIC



4



2



1

Picture Perfect Family Living

Welcome to 5 Hyatt Court Grovedale, a stunning house that offers the perfect blend of comfort, style, and convenience. This beautiful property is located in a highly sought-after area in a quiet court location and is sure to impress even the most discerning buyers.

Whilst large in size, the formal lounge room is ideal for a quiet night or entertaining friends in a quiet setting, whilst the kids have full use of an oversized rumpus room.

The master bedroom suite boasts a full en-suite, ensuring privacy and convenience. The other 3 bedrooms are of spacious proportions and all have built in robes.

Outside is an inviting alfresco where casual BBQ's will be the norm whilst enjoying the pr

Price: \$830,000 - \$880,000

Property Type: House

Land: 652.8345 m2

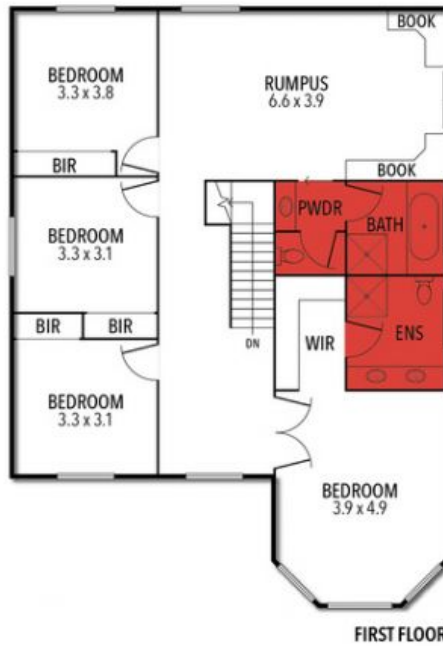
HAYDEN

Glenn Hardman

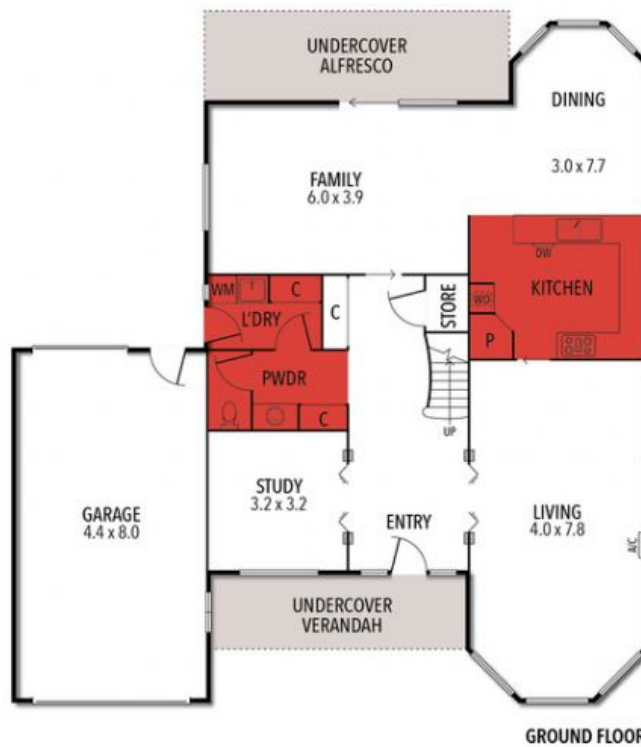
0419006480

glenn@haydengeelong.com.au

5 HYATT COURT, GROVEDALE



FIRST FLOOR



GROUND FLOOR



THE ABOVE PLAN IS AN ARTIST'S IMPRESSION ONLY, IT INCLUDES ELEMENTS THAT ARE FOR DISPLAY PURPOSES ONLY AND MAY NOT BE TO SCALE. LANDSCAPING SHOWN IS INDICATIVE ONLY. DIMENSIONS ARE APPROXIMATE.