



47 Townview Court LEOPOLD, VIC



4



2



4

A Family Haven Of The Highest Standard!

This elegant residence takes fine family living to a whole new level! Showcasing enchanting gardens, a spacious layout and an impressive shed, there's something to delight everyone on approx. 1131m²!

Price: \$1,050,000 - \$1,150,000

Property Type: House

Land: 1131 m²

Ample off-street parking is yet another standout feature. The remote double garage features internal access, while the expansive shed (with 15-amp power) was designed to accommodate a 30-foot motor home - so look no further if you need a place to store the caravan and boat!

Tucked away in a peaceful court, this home places you close to Leopold Primary School, the Ash Road shops and Gateway Plaza. Public transport is within walking distance, while the Gateway Sanctuary and Leopold Community Hub are moments away for fun family activities. Ju

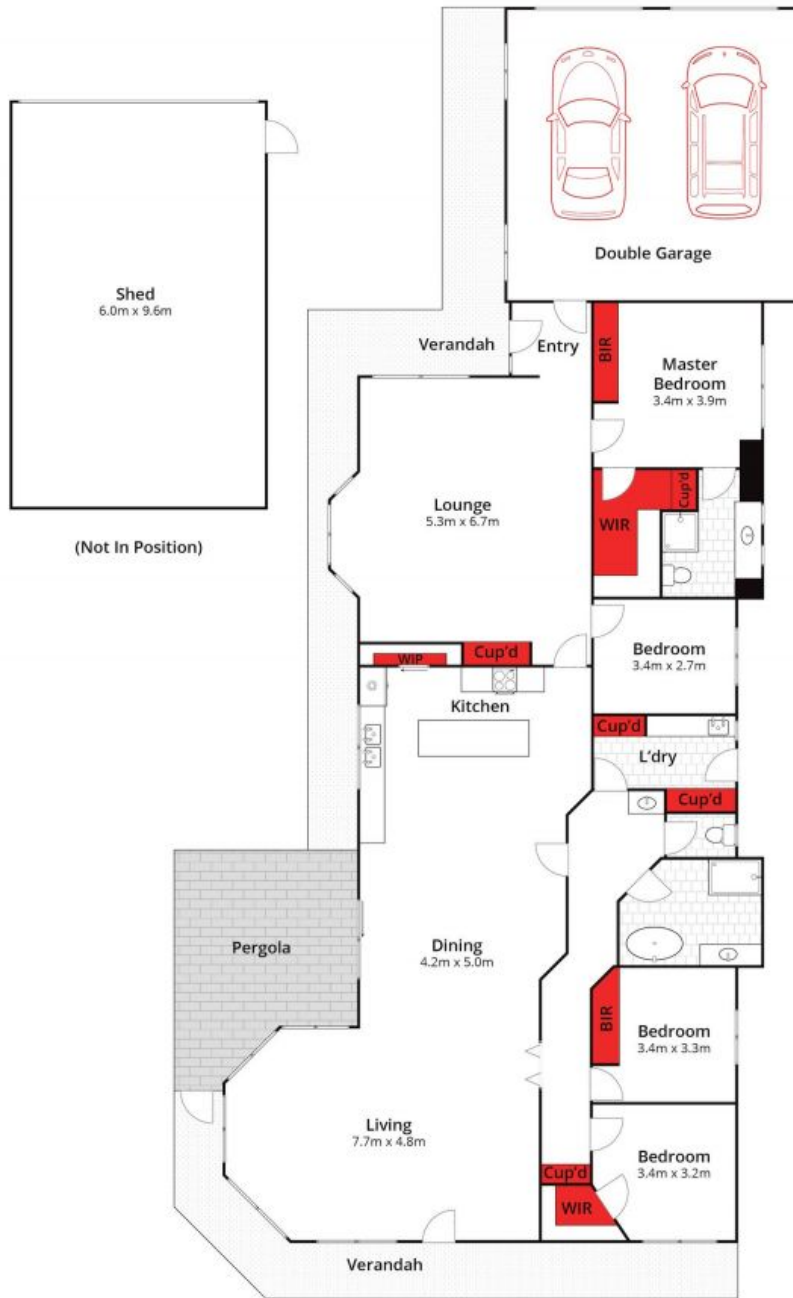
HAYDEN

David Pemberton **Karen Purcell**

0419874029

0448510143

david@haydenleopold.com.au karenp@haydenleopold.com.au



Whilst bwrn.com.au has made every attempt to ensure the accuracy of the floor plan contained here, measurements are approximate and no responsibility is taken for any error, omission, or mis-statement. This plan is for illustrative purposes only.



47 Townview Court, Leopold

HAYDEN

47 Townview Court

LEOPOLD, VIC