



17 Swamphen Drive LEOPOLD, VIC



3



2



2

## The Perfect Place To Nest Or Invest!

Don't miss this chance to embrace the carefree lifestyle you've been craving in Leopold!

Zoned to the front of the home, the main bedroom creates a private retreat with a walk-in robe and en suite. Two additional bedrooms with built-in robes share close access to the main bathroom, while the office makes working from home a breeze. The laundry features plenty of storage. Four split-system air conditioners keep you in the utmost comfort.

A carefree lifestyle awaits with public transport, the local playground and Bellarine Rail Trail a short stroll away. The Leopold Sportsmans Club is moments away for a great meal, while nearby sporting grounds inspire the whole family to venture outdoors. Easy access to the Gateway Plaza and Leopold Primary School put the practical elements in place. To top

**Price:** \$630,000 - \$670,000

**Property Type:** House

**Land:** 500 m2

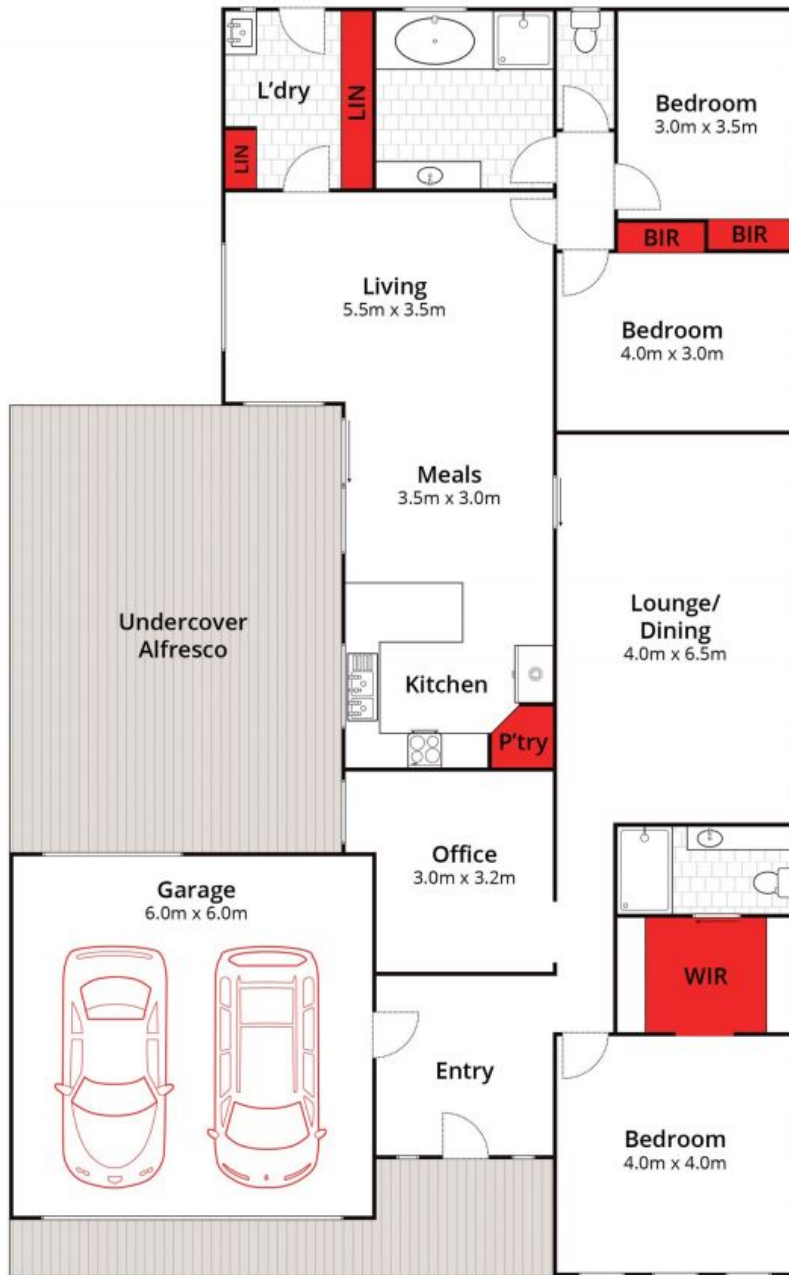
# HAYDEN

**David Pemberton** **Karen Purcell**

0419874029

0448510143

david@haydenleopold.com.au karenp@haydenleopold.com.au



Whilst [bwrn.com.au](http://bwrn.com.au) has made every attempt to ensure the accuracy of the floor plan contained here, measurements are approximate and no responsibility is taken for any error, omission, or mis-statement. This plan is for illustrative purposes only.

**17 Swamphen Drive, Leopold**

**HAYDEN**

**17 Swamphen Drive**

**LEOPOLD, VIC**