



26 Greenbank Court LEOPOLD, VIC



3



2



2

PRICE REDUCTION- Mid-Century Charm For The Family!

Nestled in a peaceful court, this cherished home presents an irresistible opportunity on approx. 731m2!

A garden path winds through the gardens, where you can relax amongst the leafy shade or listen to the tranquil sounds of the fishpond. Ample parking includes a double carport and single garage, with side gates providing a dedicated space for boat/caravan storage.

Price: \$720,000 - \$770,000

Property Type: House

Land: 731 m2

HAYDEN

Karen Purcell

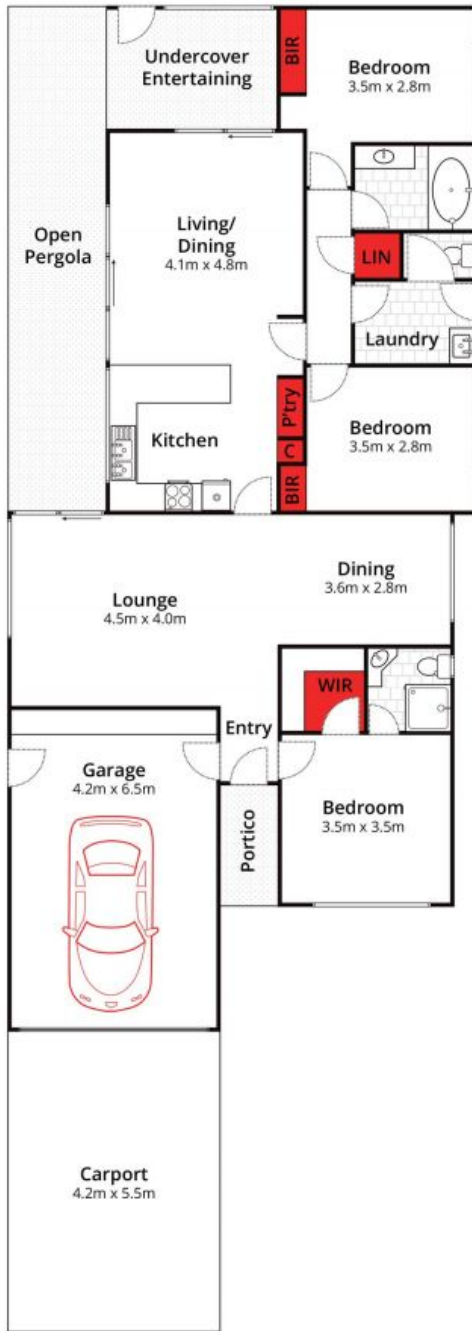
0448510143

karenp@haydenleopold.com.au

David Pemberton

0419874029

david@haydenleopold.com.au



Whilst bwrn.com.au has made every attempt to ensure the accuracy of the floor plan contained here, measurements are approximate and no responsibility is taken for any error, omission, or mis-statement. This plan is for illustrative purposes only.



26 Greenbank Court, Leopold

HAYDEN

26 Greenbank Court

LEOPOLD, VIC