



26 Greenbank Court LEOPOLD, VIC



3



2



2

## PRICE REDUCTION- Mid-Century Charm For The Family!

Nestled in a peaceful court, this cherished home presents an irresistible opportunity on approx. 731m2!

A garden path winds through the gardens, where you can relax amongst the leafy shade or listen to the tranquil sounds of the fishpond. Ample parking includes a double carport and single garage, with side gates providing a dedicated space for boat/caravan storage.

**Price:** \$720,000 - \$770,000

**Property Type:** House

**Land:** 731 m2

# HAYDEN

**Karen Purcell**

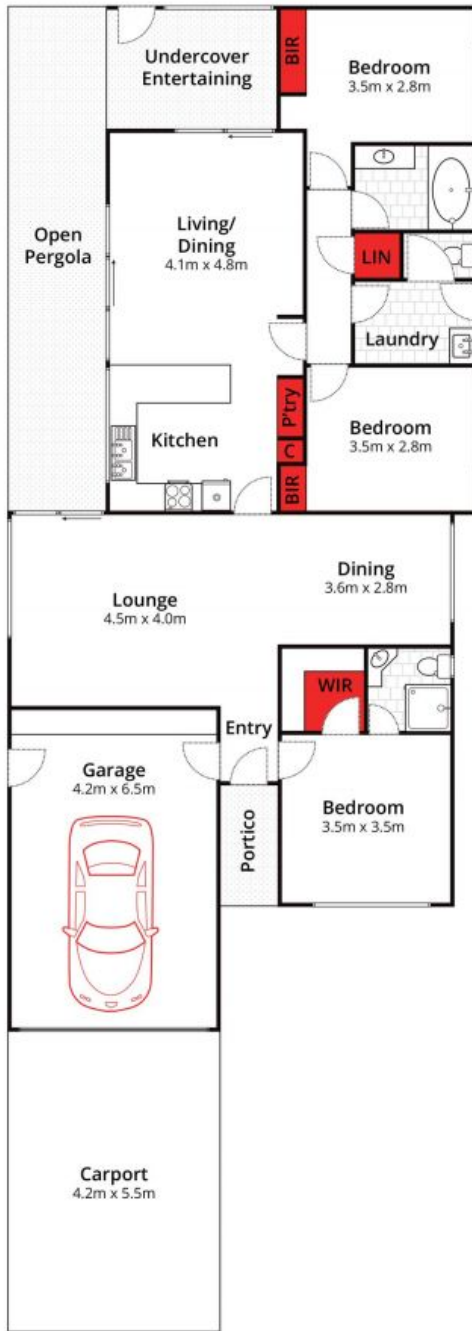
0448510143

karenp@haydenleopold.com.au

**David Pemberton**

0419874029

david@haydenleopold.com.au



Whilst [bwrn.com.au](http://bwrn.com.au) has made every attempt to ensure the accuracy of the floor plan contained here, measurements are approximate and no responsibility is taken for any error, omission, or mis-statement. This plan is for illustrative purposes only.



**26 Greenbank Court, Leopold**

**HAYDEN**

**26 Greenbank Court**

**LEOPOLD, VIC**