



48 Cresta Street LEOPOLD, VIC



3



2



2

## Make Your Homeowner Dreams A Reality!

Don't miss this opportunity to secure a terrific home within walking distance to Leopold Primary School! The secure backyard captures the northern sunshine, while ample off-street parking is a standout feature!

The front living room creates a spacious setting, where you can enjoy quiet afternoons or fun-filled movie nights. The dining/kitchen zone inspires laidback family dinners, with the kitchen boasting a built-in pantry, dishwasher and cooking appliances (wall oven, 900mm electric cooktop, 900mm rangehood).

The morning school run will be a breeze with Leopold Primary School and Leopold Kindergarten within easy walking distance. The Ash Road shops are also a short stroll away, along with local playgrounds and public transport. The Gateway Plaza provides you with an abundance

**Price:** \$620,000 - \$650,000

**Property Type:** House

**Land:** 642 m2

# HAYDEN

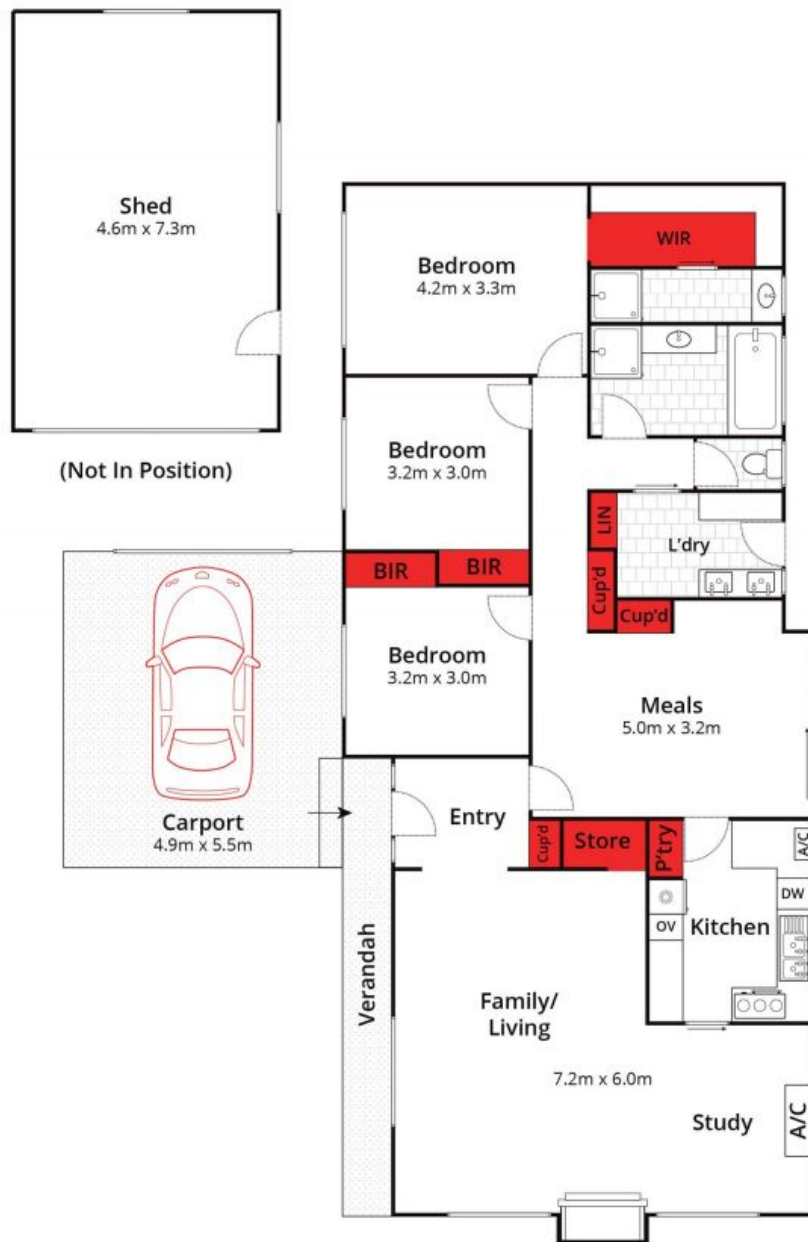
**David Pemberton**

**Karen Purcell**

0419874029

0448510143

david@haydenleopold.com.au karen@haydenleopold.com.au



Whilst [bwrn.com.au](http://bwrn.com.au) has made every attempt to ensure the accuracy of the floor plan contained here, measurements are approximate and no responsibility is taken for any error, omission, or mis-statement. This plan is for illustrative purposes only.

**48 Cresta Street, Leopold**

**HAYDEN**

**48 Cresta Street**

**LEOPOLD, VIC**