



30 Cuthbertson Drive OCEAN GROVE, VIC



4



2



2

### Immerse Yourself In The Treetops...

This captivating residence possesses a unique charm emanating from its perfect blend of location, design, and character, all enveloped by the enchanting embrace of nature. Towering trees, exotic flora such as gums, willows, palms, and succulents, along with a diverse array of birdlife including parrots, rosellas, lorikeets, and galahs, contribute to the magical surroundings. Even the occasional tawny frogmouth graces the landscape!

Perched on the sloping terrain adjacent to the picturesque Blue Lake, the home incorporates multiple levels in its architectural design. Approaching from Cuthbertson Drive, one descends via steps to a charming decked terrace - an idyllic setting for al fresco dining or enjoying refreshing beverages. Let's designate this as the "median" level. Accessible through either the front door or double kitchen doors opening onto the terrace, the interior welcomes you with a splendid open-plan, dual-level kitchen/dining/lounge area that seamlessly integrates with the botanical panorama. This space also leads to a second deck through

**Price:** \$1,300,000 - \$1,400,000  
**Property Type:** House  
**Land:** 798 m2

HAYDEN

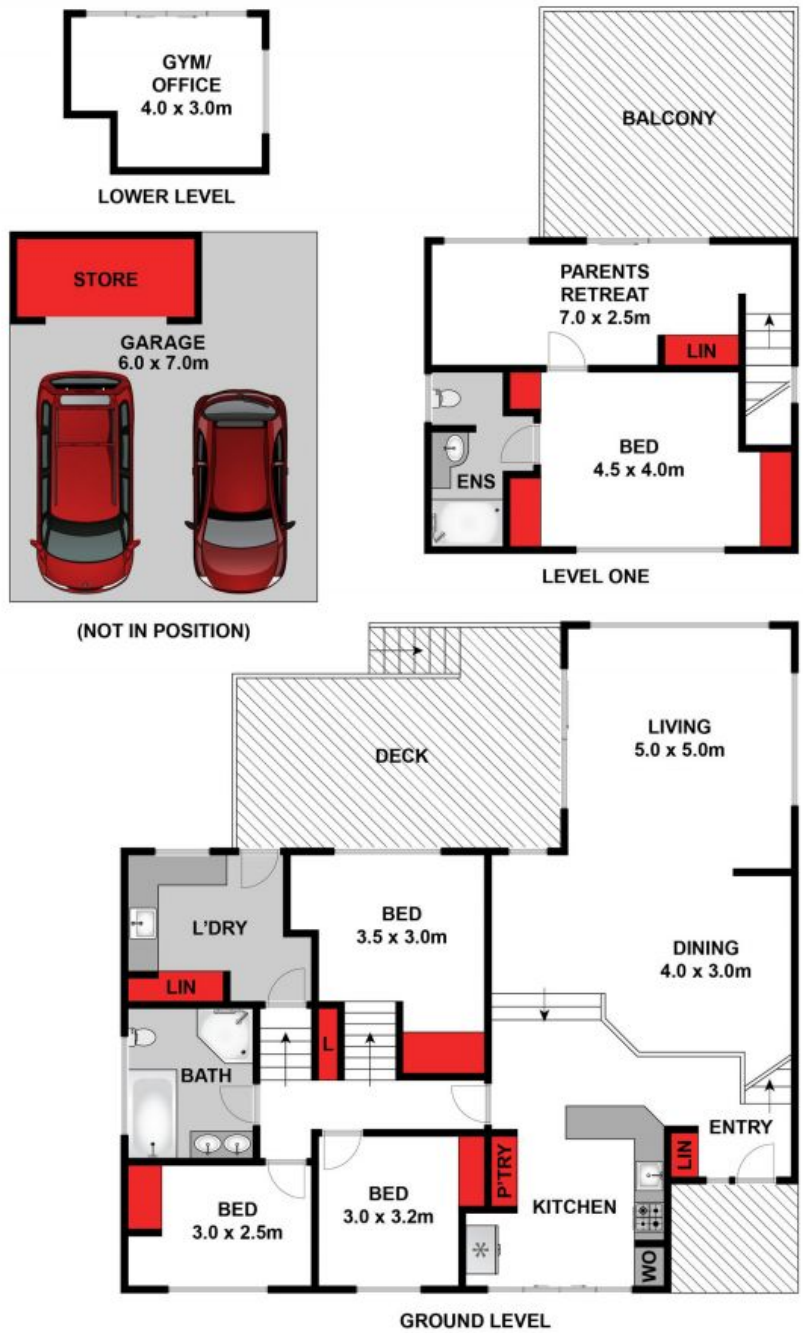
Lynley Bassett

0448515925

Hugh McKewan

0417538779

lynley@haydenoceanogrove.vic.au hugh@haydenoceanogrove.com.au



(NOT IN POSITION)

Whilst [bwrn.com.au](http://bwrn.com.au) has made every attempt to ensure the accuracy of the floor plan contained here, measurements are approximate and no responsibility is taken for any error, omission, or mis-statement. This plan is for illustrative purposes only.

## 30 Cuthbertson Drive, Ocean Grove **HAYDEN**

30 Cuthbertson Drive

OCEAN GROVE, VIC