



3 Stevens Court LEOPOLD, VIC



3



1



2

A Charming First Home Or Downsizer!

Located a short stroll to the Gateway Plaza, this low-maintenance home presents an ideal choice for first homebuyers, downsizers and investors alike!

Price: \$535,000 - \$575,000

Property Type: House

Land: 430 m2

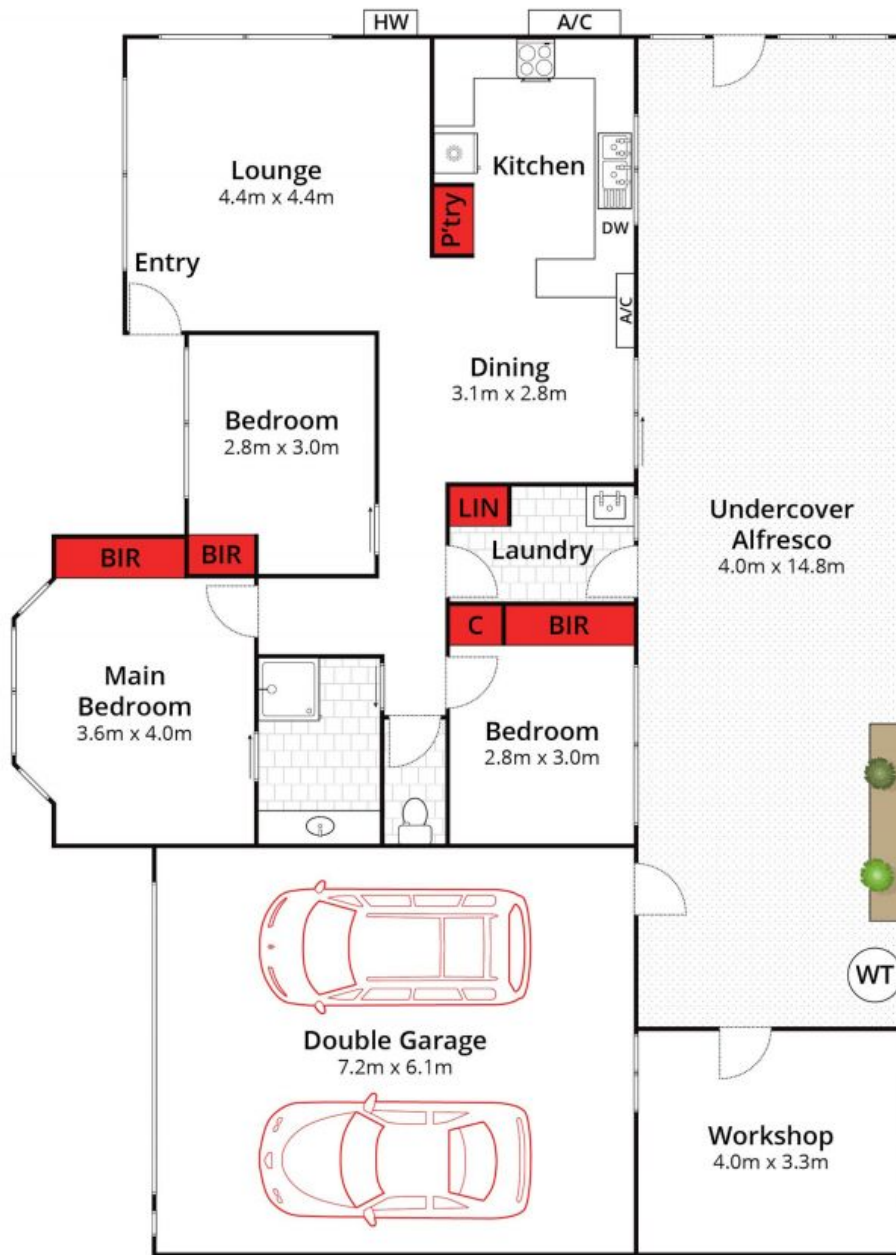
HAYDEN

David Pemberton **Karen Purcell**

0419874029

0448510143

david@haydenleopold.com.au karenp@haydenleopold.com.au



Whilst bwrn.com.au has made every attempt to ensure the accuracy of the floor plan contained here, measurements are approximate and no responsibility is taken for any error, omission, or mis-statement. This plan is for illustrative purposes only.



3 Stevens Court, Leopold

HAYDEN

3 Stevens Court

LEOPOLD, VIC