



3 Stevens Court LEOPOLD, VIC



3



1



2

### A Charming First Home Or Downsizer!

Located a short stroll to the Gateway Plaza, this low-maintenance home presents an ideal choice for first homebuyers, downsizers and investors alike!

**Price:** \$535,000 - \$575,000

**Property Type:** House

**Land:** 430 m2

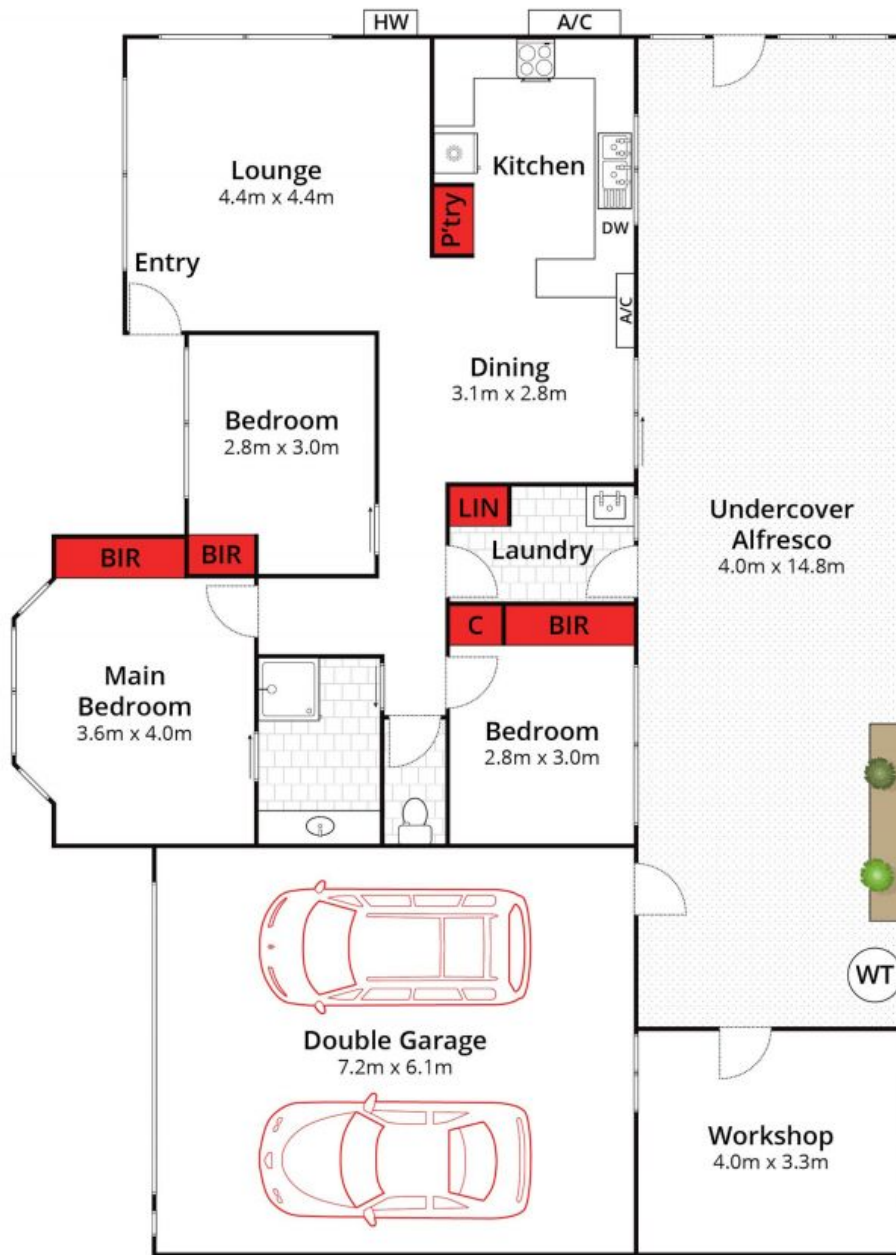
**HAYDEN**

**David Pemberton Karen Purcell**

0419874029

0448510143

david@haydenleopold.com.au karenp@haydenleopold.com.au



Whilst [bwrn.com.au](http://bwrn.com.au) has made every attempt to ensure the accuracy of the floor plan contained here, measurements are approximate and no responsibility is taken for any error, omission, or mis-statement. This plan is for illustrative purposes only.



**3 Stevens Court, Leopold**

**HAYDEN**

**3 Stevens Court**

**LEOPOLD, VIC**