



16 Tidal Street LEOPOLD, VIC



4



2



2

PRICE REDUCTION !

Occupying a corner allotment, this spacious residence is the perfect choice for modern families!

The kitchen is perfection with stone benchtops, a walk-in pantry and stainless steel appliances (dishwasher and 900mm oven/gas cooktop). Pendant lights make a stylish statement above the breakfast bar, which is ideal for those busy school mornings.

Price: \$720,000 - \$760,000

Property Type: House

Land: 507 m2

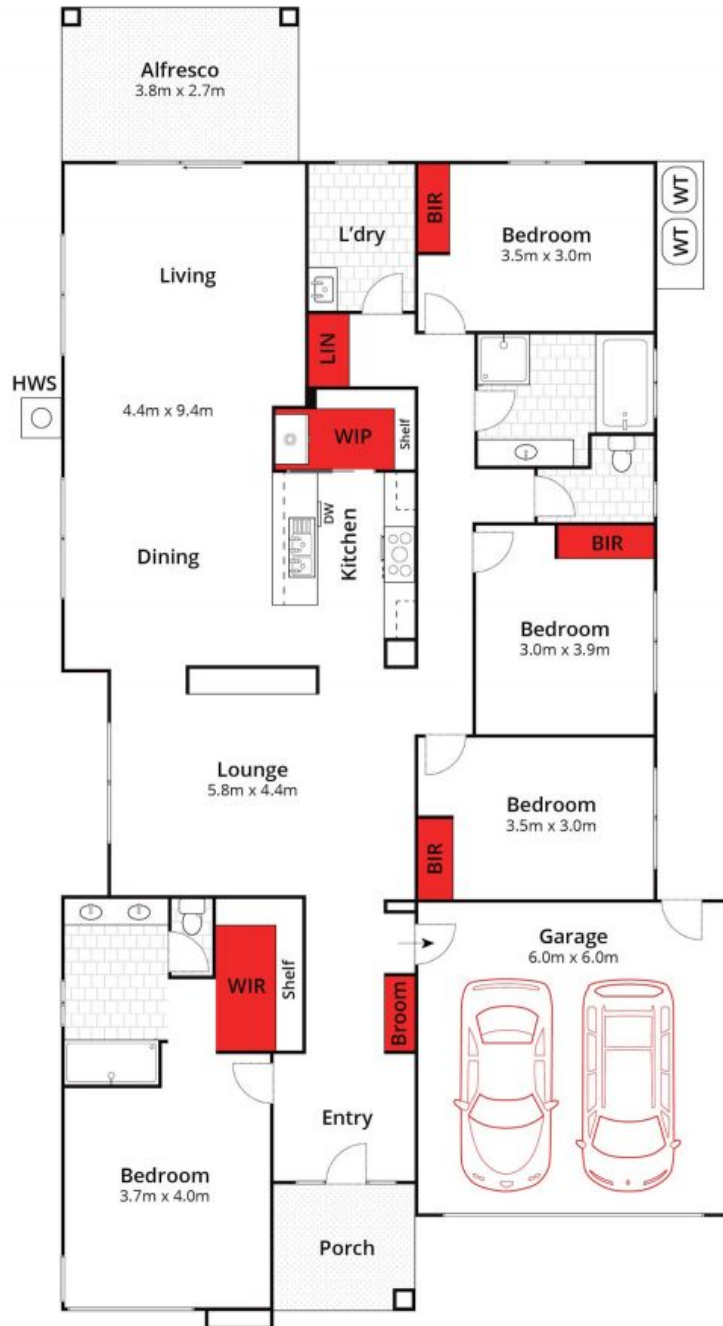
HAYDEN

David Pemberton **Karen Purcell**

0419874029

0448510143

david@haydenleopold.com.au karenp@haydenleopold.com.au



Whilst bwrn.com.au has made every attempt to ensure the accuracy of the floor plan contained here, measurements are approximate and no responsibility is taken for any error, omission, or mis-statement. This plan is for illustrative purposes only.

16 Tidal Street, Leopold

HAYDEN

16 Tidal Street

LEOPOLD, VIC