



4 Lawrence Street LEOPOLD, VIC



Footsteps From The Ash Road Shops!

This cherished home is superbly located around the corner from the Ash Road shops! Situated within a Residential Growth Zone, this property will instantly appeal to families and savvy developers alike (STCA).

Home to a cubby house and sandpit, the generous backyard is perfect for young families. Fruit trees and veggie gardens invite you to enjoy fresh produce straight from the source, while the garden shed and storage area put the practical elements in place. The single garage features a workbench, while the wide driveway is ideal for boat/caravan storage.

Price: \$600,000 - \$660,000
Property Type: House
Land: 613 m2

HAYDEN

Karen Purcell

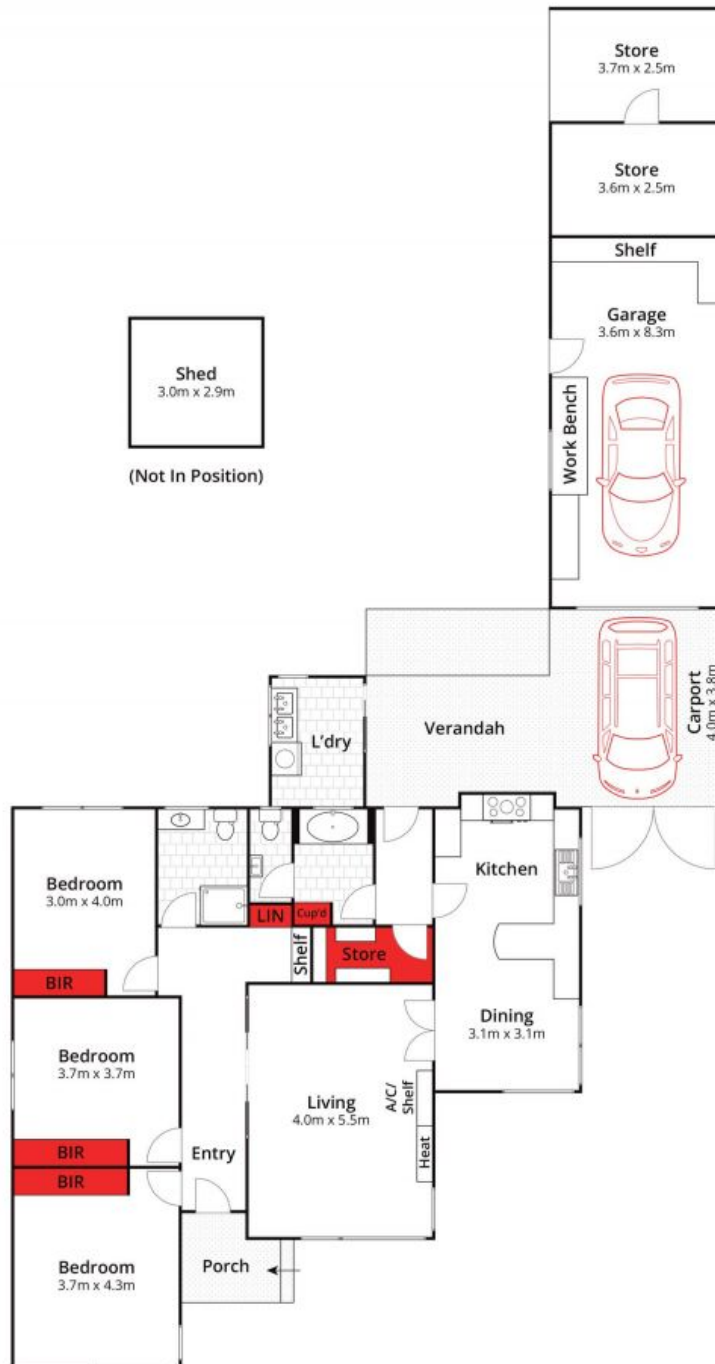
0448510143

karenp@haydenleopold.com.au

David Pemberton

0419874029

david@haydenleopold.com.au



Whilst bwrn.com.au has made every attempt to ensure the accuracy of the floor plan contained here, measurements are approximate and no responsibility is taken for any error, omission, or mis-statement. This plan is for illustrative purposes only.



4 Lawrence Street, Leopold

HAYDEN

4 Lawrence Street

LEOPOLD, VIC