



2A Robertson Road LEOPOLD, VIC



2



2



1

Leafy Townhouse Living!

Located a short walk to Leopold Primary School and the Dorothy Street shops, this two-storey townhouse is an absolute gem!

Upstairs, two bedrooms (one with a walk-in robe, one with built-in robes) share close access to the bathroom and powder room. You'll love that the main bedroom also features an elevated outlook. The study nook is ideal for students or sending some last-minute work emails. Two split-system air conditioners provide comfort, while the remote single garage features internal access.

This superb location also places you less than 400 metres from public transport, the Leopold Community Hub and Leopold Library. The Bellarine Rail Trail inspires you to venture outdoors, while the Gateway Plaza is moments away for all your shopping needs. Just jump in the car, and you'll soon be exploring the delights of the Geelong CBD or Bellarine Peninsula.

Price: \$540,000 - \$580,000

Property Type: Unit

Land: 392 m2

HAYDEN

Karen Purcell

0448510143

karenp@haydenleopold.com.au

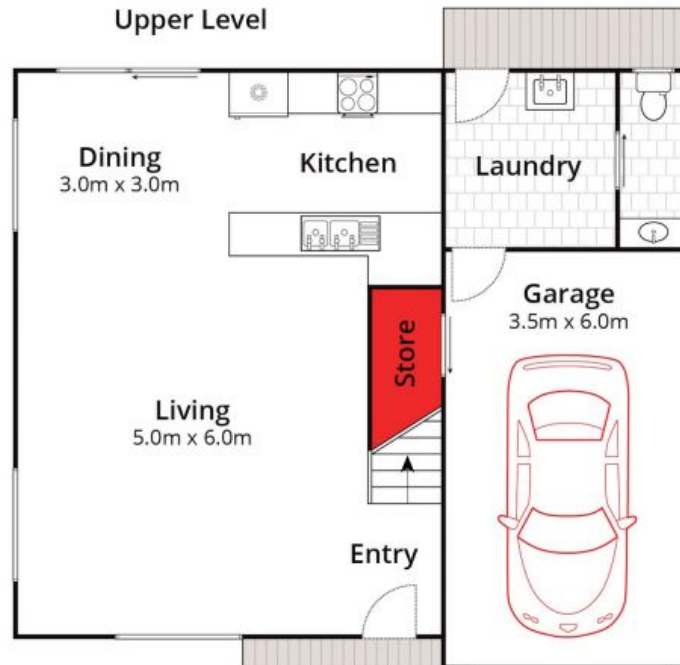
David Pemberton

0419874029

david@haydenleopold.com.au



Upper Level



Ground Level

Whilst bwrn.com.au has made every attempt to ensure the accuracy of the floor plan contained here, measurements are approximate and no responsibility is taken for any error, omission, or mis-statement. This plan is for illustrative purposes only.

2A Robertson Road, Leopold

HAYDEN

2A Robertson Road

LEOPOLD, VIC