



15 Ontario Avenue CORIO, VIC



3



1

Large Block, Convenient Location

A great investment or affordable first home is on offer with this 3 bedroom mid century home on a large allotment of approximately 702m². The home has had many upgrades and the compliance inspection has been completed to make the property tenant ready. With potential to further develop the site (STCA) and situated in such a wonderful location close to schools and Corio Village Shopping Centre, this could be the property that secures you and your family's future.

Price: \$449,000 - \$479,000

Property Type: House

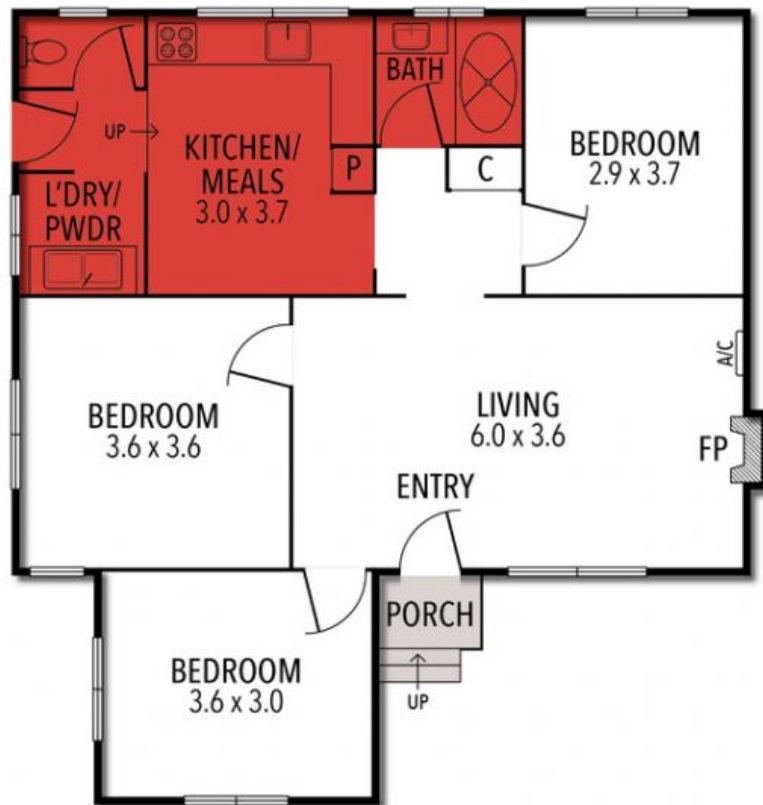
Land: 702 m²

HAYDEN

Laurie McGovan

0412167677

laurie@haydengeelong.com.au



THE ABOVE PLAN IS AN ARTIST'S IMPRESSION ONLY, IT INCLUDES ELEMENTS THAT ARE FOR DISPLAY PURPOSES ONLY AND MAY NOT BE TO SCALE. LANDSCAPING SHOWN IS INDICATIVE ONLY. DIMENSIONS ARE APPROXIMATE.