



8 Kylemore Court LEOPOLD, VIC



4



2



4

Family Living With Large 3-Phase Power Shed

Step into the ultimate entertainer's dream home, where space and comfort take centre stage, creating an inviting haven for families. Tucked away in a serene court location, this property boasts room to move and entertain!

The residence showcases three generously proportioned bedrooms with built-in robes, including a master suite adorned with a walk-in robe and ensuite. A separate fourth bedroom or study provides flexibility to suit various needs. The first of two living areas, strategically positioned near the master suite, offers a tranquil retreat for parents.

Perfectly located near schools, shops, and transport, this maintained property presents the ultimate buying opportunity. It's ready for a new family to step in and make it their own.

Price: \$750,000 - \$800,000

Property Type: House

Land: 757 m2

HAYDEN

Karen Purcell

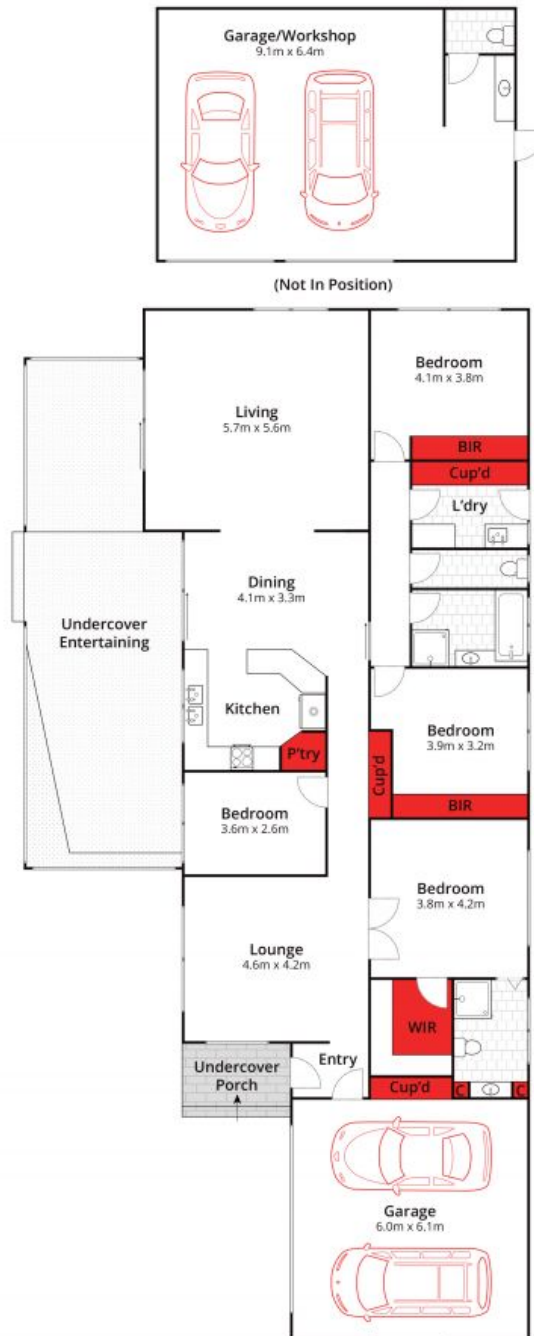
0448510143

karenp@haydenleopold.com.au

David Pemberton

0419874029

david@haydenleopold.com.au



Whilst bwrn.com.au has made every attempt to ensure the accuracy of the floor plan contained here, measurements are approximate and no responsibility is taken for any error, omission, or mis-statement. This plan is for illustrative purposes only.



8 Kylemore Court, Leopold

HAYDEN

8 Kylemore Court

LEOPOLD, VIC