



33-35 Estuary Boulevard LEOPOLD, VIC



4



2



2

## Spacious Living A Heartbeat From The Park!

If you've been searching for a spacious family haven, look no further!

Double doors open onto the main bedroom, which creates a spacious retreat with dual walk-in robes and an en suite. Three additional bedrooms with built-in robes are tucked away in a separate wing, along with the main bathroom and separate toilet. Other features include ducted heating, two split-system air conditioners, a bar nook, and a laundry with external access.

This family-friendly location places the local playground and sporting grounds virtually on your doorstep. Leopold Primary School is moments away for young families, while the Gateway Sanctuary inspires you to immerse yourself in nature. The Gateway Plaza leaves you spoilt for choice with shopping and dining options. To top it all off, you can enjoy easy acc

**Price:** \$780,000 - \$830,000

**Inspect:** Saturday, 4th May 2024 1:30 - 2:00

**Property Type:** House

**Land:** 703 m2

# HAYDEN

**Karen Purcell**

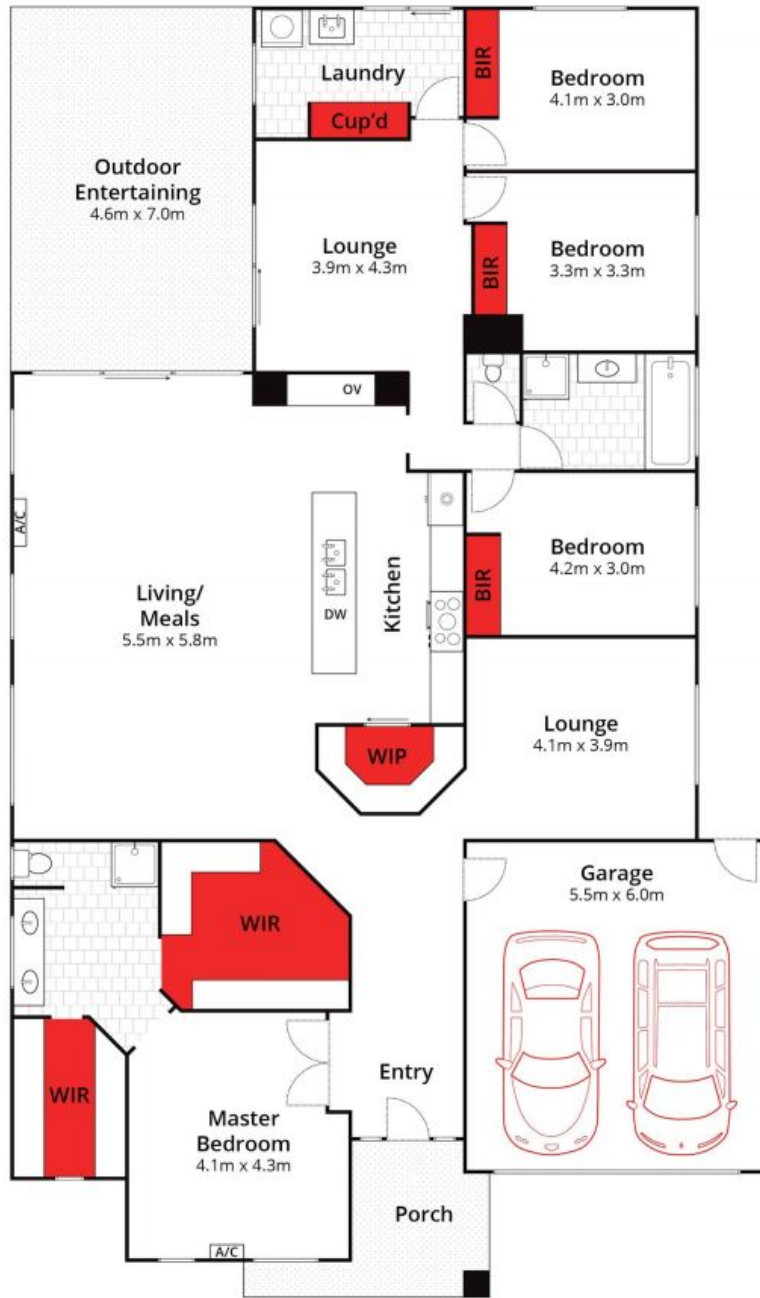
0448510143

karenp@haydenleopold.com.au

**David Pemberton**

0419874029

david@haydenleopold.com.au



Whilst [bwrn.com.au](http://bwrn.com.au) has made every attempt to ensure the accuracy of the floor plan contained here, measurements are approximate and no responsibility is taken for any error, omission, or mis-statement. This plan is for illustrative purposes only.



**33/35 Estuary Boulevard, Leopold**

**HAYDEN**

**33-35 Estuary Boulevard**

**LEOPOLD, VIC**