



27 Benita Place LEOPOLD, VIC



4



2



4

## Spacious Living In A 'Walk To Everything' Location!

Located a short walk to Leopold Primary School & the Gateway Plaza, this property presents spacious family living inside and out!

The kitchen will delight cooking enthusiasts with stone benchtops, a walk-in pantry and island bench/breakfast bar. Quality stainless steel appliances include a Kleenmaid dishwasher and Artusi 900mm oven/gas cooktop.

The front garden provides privacy to the main bedroom, which features a walk-in robe and en suite. Three additional bedrooms with built-in robes are tucked away in a separate wing, close to the main bathroom and laundry. Other features include ducted heating, evaporative cooling, and stone benchtops to both bathrooms. The remote double garage features internal access, while a dedicated space beside the garage is ideal for storing a trailer or sma

**Price:** \$710,000 - \$760,000  
**Property Type:** House  
**Land:** 671 m2

# HAYDEN

**Karen Purcell**

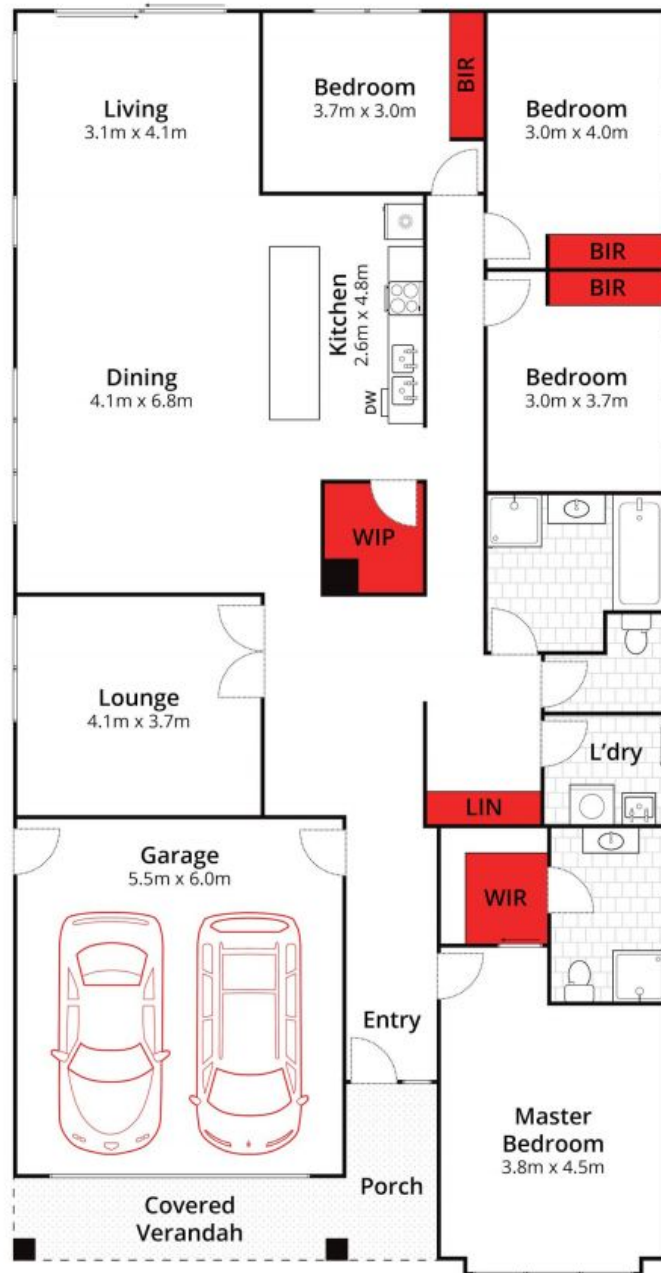
0448510143

karenp@haydenleopold.com.au

**David Pemberton**

0419874029

david@haydenleopold.com.au



Whilst [bwrn.com.au](http://bwrn.com.au) has made every attempt to ensure the accuracy of the floor plan contained here, measurements are approximate and no responsibility is taken for any error, omission, or mis-statement. This plan is for illustrative purposes only.

**27 Benita Place, Leopold**

**HAYDEN**

**27 Benita Place**

**LEOPOLD, VIC**