



27 Benita Place LEOPOLD, VIC



4



2



4

Spacious Living In A 'Walk To Everything' Location!

Located a short walk to Leopold Primary School & the Gateway Plaza, this property presents spacious family living inside and out!

The kitchen will delight cooking enthusiasts with stone benchtops, a walk-in pantry and island bench/breakfast bar. Quality stainless steel appliances include a Kleenmaid dishwasher and Artusi 900mm oven/gas cooktop.

The front garden provides privacy to the main bedroom, which features a walk-in robe and en suite. Three additional bedrooms with built-in robes are tucked away in a separate wing, close to the main bathroom and laundry. Other features include ducted heating, evaporative cooling, and stone benchtops to both bathrooms. The remote double garage features internal access, while a dedicated space beside the garage is ideal for storing a trailer or sma

Price: \$710,000 - \$760,000
Property Type: House
Land: 671 m2



Karen Purcell

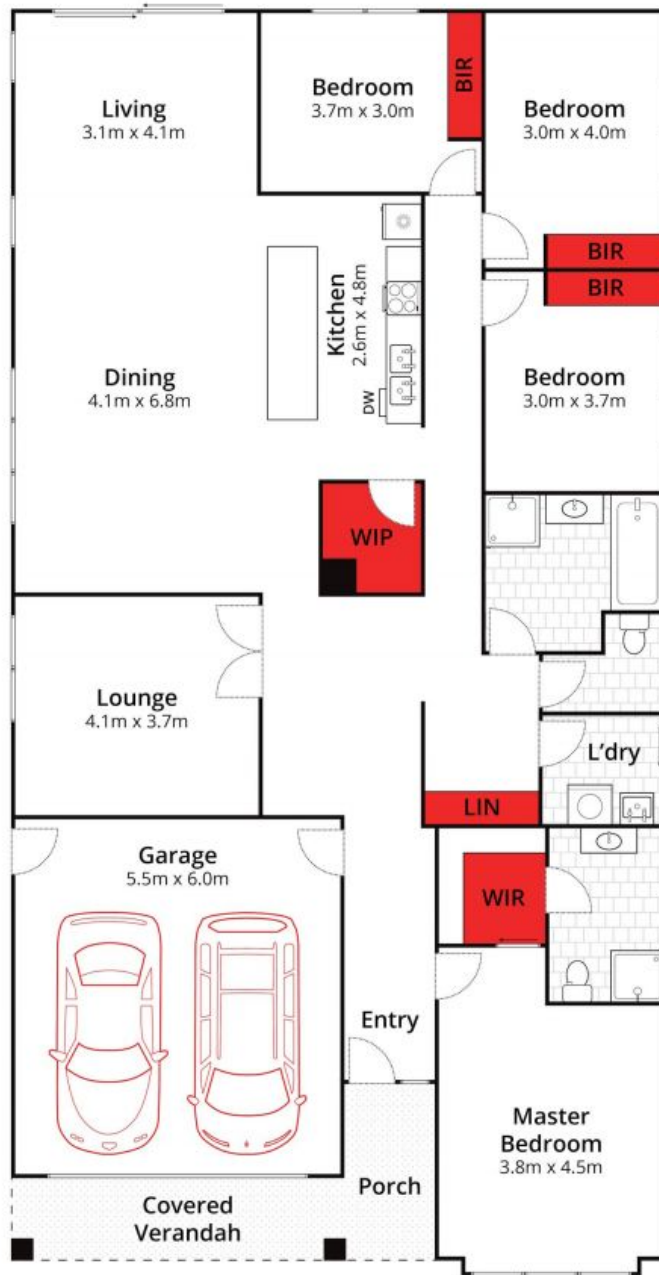
0448510143

karenp@haydenleopold.com.au

David Pemberton

0419874029

david@haydenleopold.com.au



Whilst bwrn.com.au has made every attempt to ensure the accuracy of the floor plan contained here, measurements are approximate and no responsibility is taken for any error, omission, or mis-statement. This plan is for illustrative purposes only.

27 Benita Place, Leopold

HAYDEN