



157B Carr Street THOMSON, VIC



3



2



1

## Contemporary, Low-Maintenance Living!

If you've been seeking a low-maintenance lifestyle, look no further than this three-bedroom residence!

The open plan living/dining/kitchen zone creates a generous setting for when family and friends come to visit. You'll love that a sliding door opens onto the low-maintenance courtyard, where you can sit back and soak up the north-eastern sunshine. The kitchen makes a stylish statement with stone benchtops, a black sink, breakfast bar and stainless-steel appliances (dishwasher, oven, gas cooktop, rangehood).

A convenient lifestyle awaits, with the home positioned on the cusp of South Geelong and East Geelong. The Bellarine Rail Trail and Geelong Showgrounds are directly across the road, while public transport and the Thomson Recreational Reserve are a short stroll away. Young families will appreciate that they can walk to Tate Street Primary School or St Margare

**Price:** \$530,000 - \$560,000

**Inspect:** Saturday, 18th May 2024 2:00 - 2:20

**Property Type:** Unit

**Land:** 284 m<sup>2</sup>

# HAYDEN

**Karen Purcell**

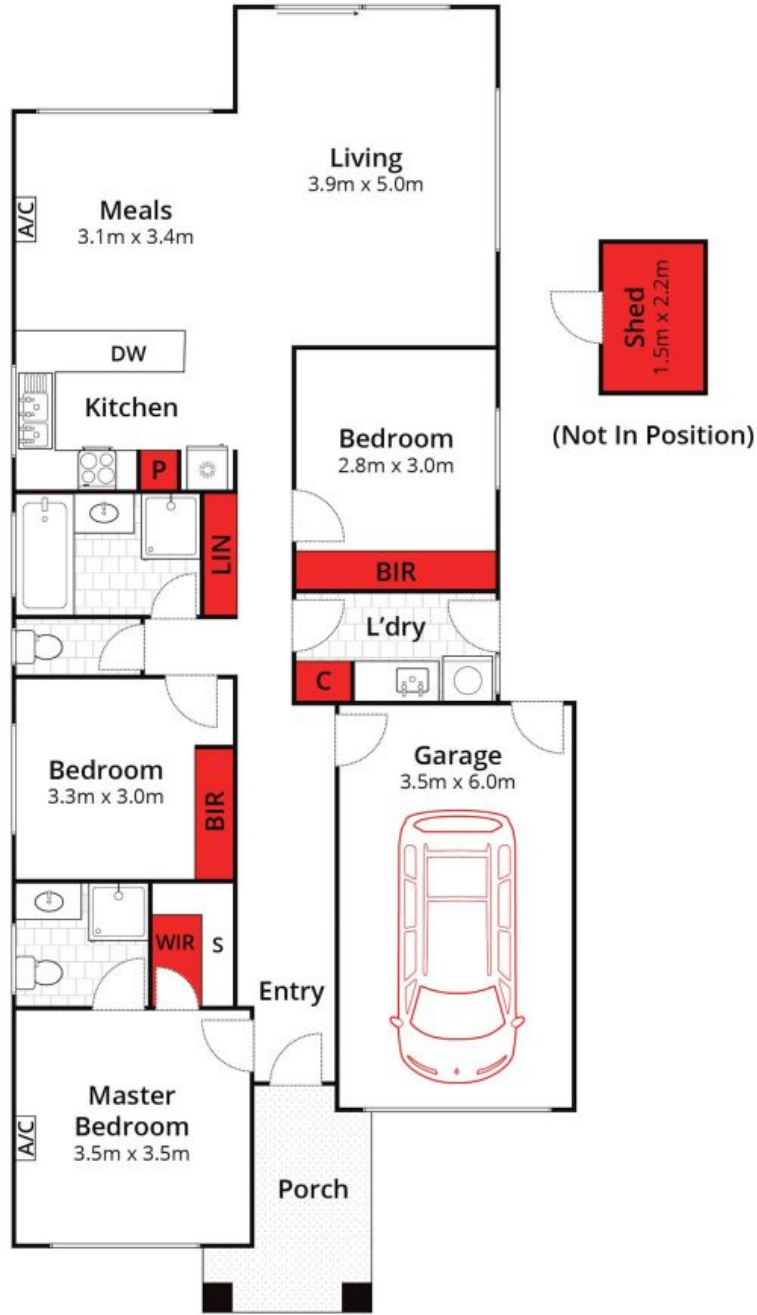
0448510143

karenp@haydenleopold.com.au

**David Pemberton**

0419874029

david@haydenleopold.com.au



Whilst [bwrn.com.au](http://bwrn.com.au) has made every attempt to ensure the accuracy of the floor plan contained here, measurements are approximate and no responsibility is taken for any error, omission, or mis-statement. This plan is for illustrative purposes only.



**157B Carr Street, Thomson**

**HAYDEN**

**157B Carr Street**

**THOMSON, VIC**