



49 Pickworth Drive LEOPOLD, VIC



3



2



2

Attention First Home Buyers!

Ideally situated to take advantage of a perfectly central location, moments' walk from Gateway Plaza, Leopold Primary School and open parklands, this light and bright three-bedroom home presents in immaculate condition, ready for occupancy.

Accommodation is catered for across three spacious bedrooms, the master affording privacy to the front of the home with the added luxuries of a walk-in robe, stylish ensuite, bathroom storage cupboard and ceiling fan. The two minor bedrooms host built-in robes and ceiling fans.

Price: \$560,000 - \$600,000

Property Type: House

Land: 425 m2

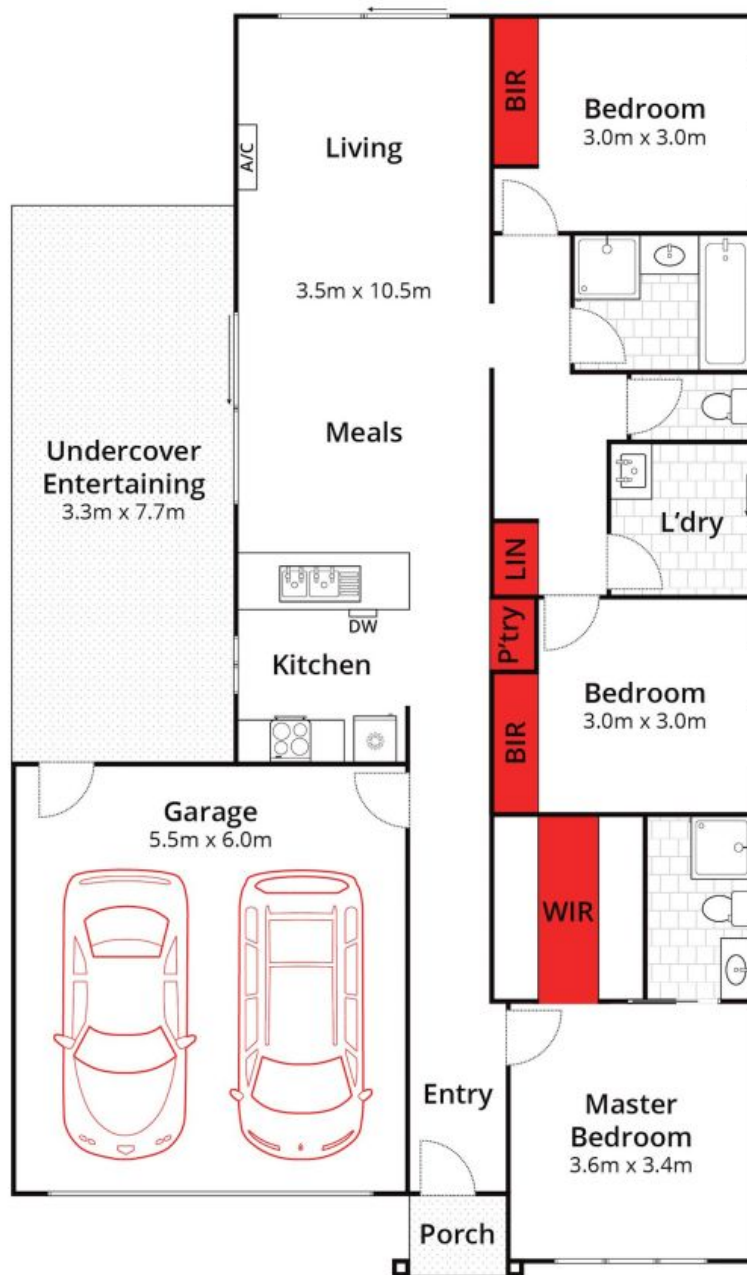
HAYDEN

David Pemberton **Karen Purcell**

0419874029

0448510143

david@haydenleopold.com.au karenp@haydenleopold.com.au



Whilst bwrn.com.au has made every attempt to ensure the accuracy of the floor plan contained here, measurements are approximate and no responsibility is taken for any error, omission, or mis-statement. This plan is for illustrative purposes only.



49 Pickworth Drive, Leopold

HAYDEN

49 Pickworth Drive

LEOPOLD, VIC