



HAYDEN

REGISTER TO INSPECT

To secure your inspection of this property, please register using the inspection links provided.

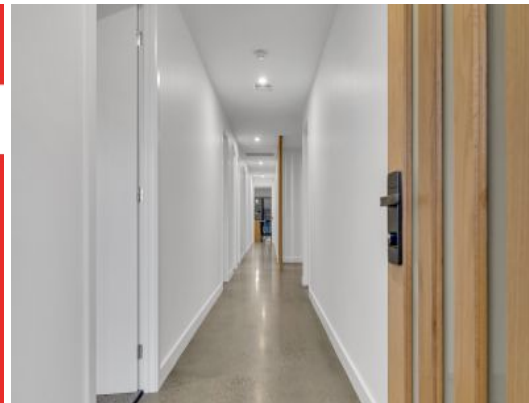
By registering you will automatically be advised of any changes, updates, cancellations, or future inspections.

Application links will be sent once inspections have been attended.

PHOTO ID IS REQUIRED AT ALL OPEN HOMES.

P: 03 5222 3566

A: 6A Stoddart Street, Geelong VIC 3220



6A Stoddart Street HAMLIN HEIGHTS, VIC



4



2



1

Beautiful, Brand New & Brilliantly Located

Situated in the highly sought after and convenient location in the heart of Belmont this meticulously constructed townhouse offers a functional floor plan of generous proportions and is perfectly located within an easy stroll to High Street and the many caf?s, restaurants and shops on offer.

Delivering an exceptional low maintenance lifestyle, the sparkling new interior features:

- ? A bright open plan living area comprising living, dining room & kitchen and study nook.
- ? The kitchen boasts a full complement of prestigious Kleenmaid 900mm appliances, 40mm stone benchtops with waterfall side and ample storage.
- ? Separate laundry with exceptional storage
- ? Powder room
- ? Master bedroom with built-in robes and a sleek modern ensuite with twin vanities and flo

Price: \$600 per week

Property Type: House

Date Available: Friday, 15th March 2024

HAYDEN

Anna Vines

0493 223 192

anna@haydengeelong.com.au

Floor Plan

6A Stoddart St Hamlyn Heights VIC 3215



THE ABOVE PLAN IS AN ARTIST'S IMPRESSION ONLY, IT INCLUDES ELEMENTS THAT ARE FOR DISPLAY PURPOSES ONLY AND MAY NOT BE TO SCALE, THE POSITIONING OF ELEMENTS SHOWN IS INDICATIVE ONLY, THIS PLAN IS FOR INFORMATION ONLY.

6A Stoddart Street **HAMLIN HEIGHTS, VIC**