



4 Ash Road LEOPOLD, VIC



3



2



1

## Beautifully Updated & Ready To Enjoy!

Occupying a corner block, this beautifully-updated home presents an irresistible opportunity for first homebuyers and young families alike!

Original floorboards and high ceilings add character to the freshly painted interiors, with beautiful updates inviting you to move straight in and enjoy. Northern light filters through the front living room, which flows into the dining/kitchen zone. The kitchen exudes rustic charm with timber cabinetry, a built-in pantry, dishwasher and cooking appliances (oven, gas cooktop, rangehood).

The main bedroom features built-in robes and an en suite. Two additional bedrooms share close access to the bathroom, while the updated laundry and separate toilet complete the layout. Ducted heating and three split-system air conditioners ensure year-round comfort. Other updates include a new instantaneous hot water system, freshly painted exterior, freshly sanded/polished floorboards, new light fittings, new door handles, and new floor tiles to

**Price:** \$580,000 - \$620,000

**Property Type:** House

**Land:** 578 m2

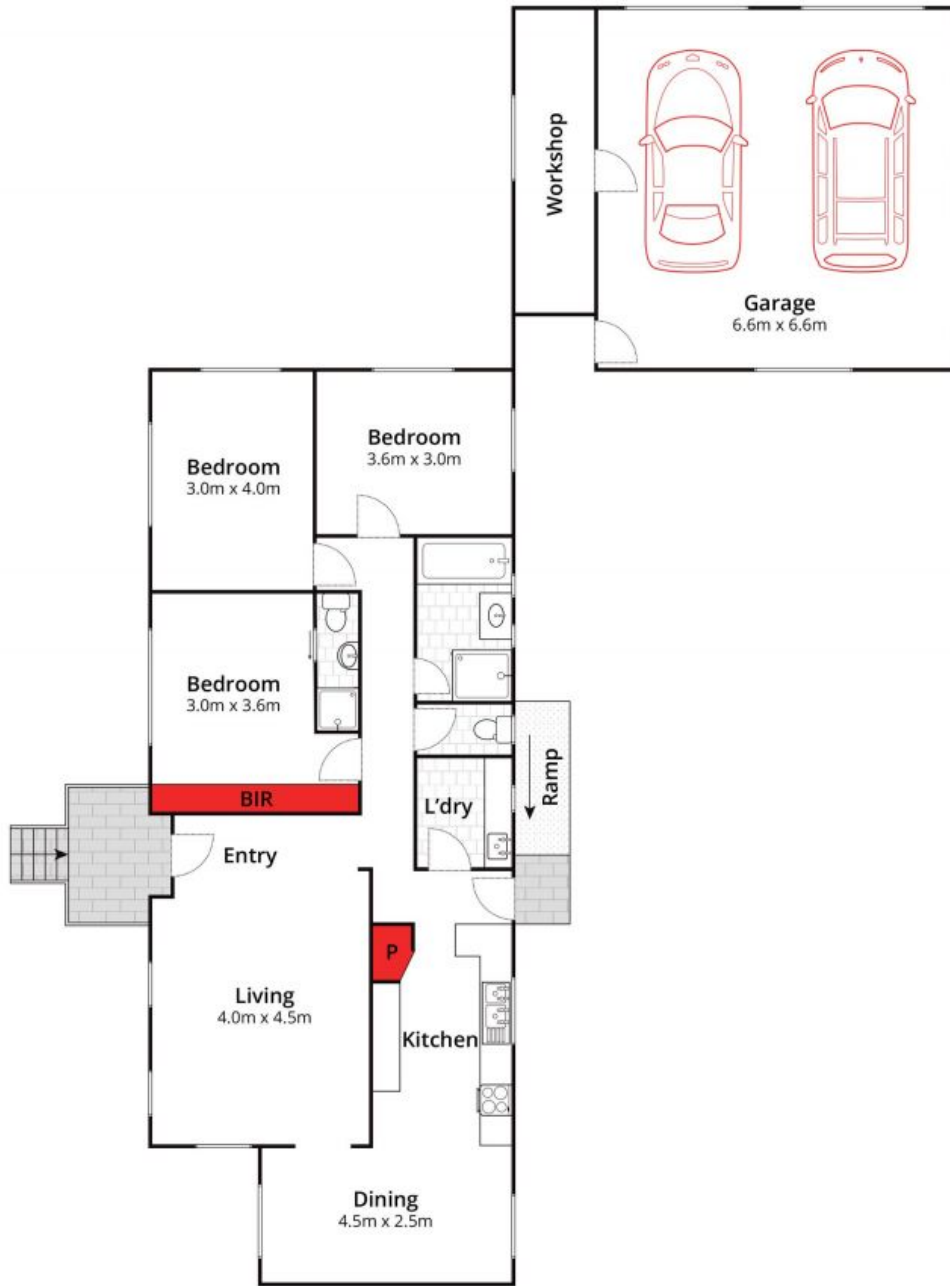
# HAYDEN

**David Pemberton** **Karen Purcell**

0419874029

0448510143

david@haydenleopold.com.au karenp@haydenleopold.com.au



Whilst [bwrn.com.au](http://bwrn.com.au) has made every attempt to ensure the accuracy of the floor plan contained here, measurements are approximate and no responsibility is taken for any error, omission, or mis-statement. This plan is for illustrative purposes only.



**4 Ash Road, Leopold**

**HAYDEN**

**4 Ash Road**

**LEOPOLD, VIC**