

19 Tispa Drive LEOPOLD, VIC



4



2



2

Expansive Family Home Near To Parklands

Ideally positioned to enjoy the best of both worlds, within walking distance to Gateway Plaza and a ten minute drive to the coast, this ultra spacious family home has been designed for maximum interior enjoyment across a convenient single level. The low maintenance 400sqm (approx.) allotment benefits from close proximity to Estuary Boulevard Reserve, an open arena for sporting and soccer enthusiasts, children at play and fitness groups.

Price: \$650,000 - \$690,000
Inspect: Saturday, 11th May 2024 11:05 - 11:25
Property Type: House
Land: 400 m2

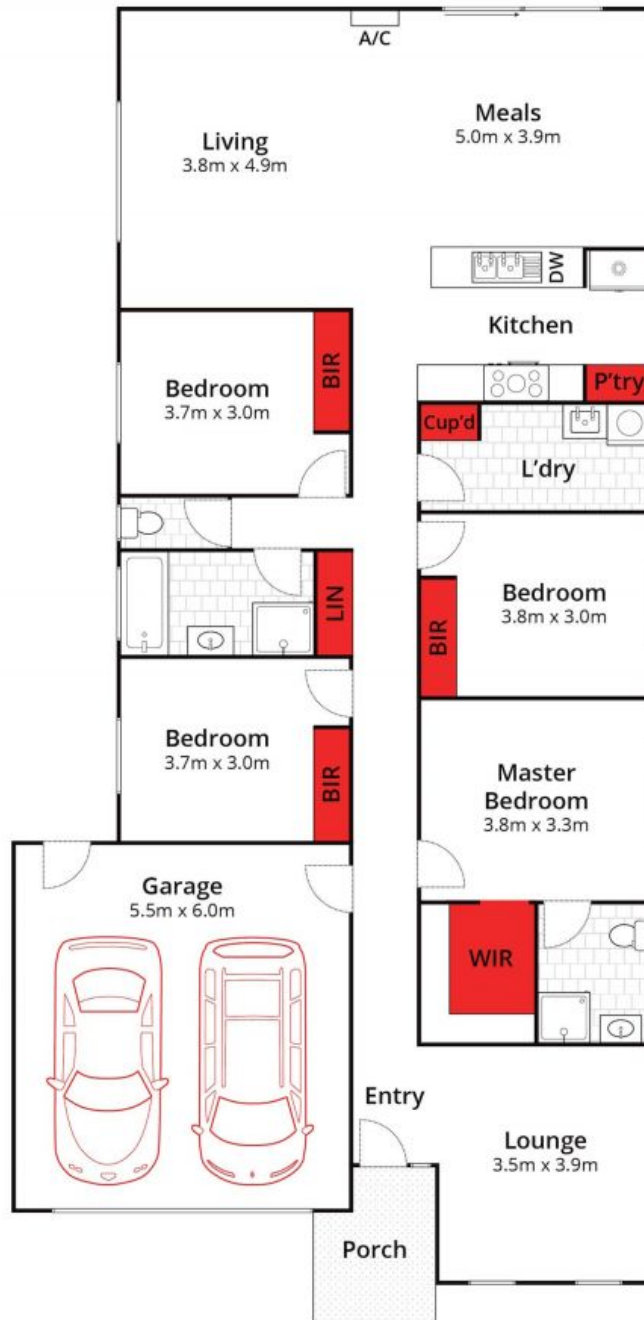
HAYDEN

David Pemberton **Karen Purcell**

0419874029

0448510143

david@haydenleopold.com.au karen@haydenleopold.com.au



Whilst bwrn.com.au has made every attempt to ensure the accuracy of the floor plan contained here, measurements are approximate and no responsibility is taken for any error, omission, or mis-statement. This plan is for illustrative purposes only.



19 Tispa Drive, Leopold

HAYDEN

19 Tispa Drive

LEOPOLD, VIC