

19 Tispa Drive LEOPOLD, VIC



4



2



2

## Expansive Family Home Near To Parklands

Ideally positioned to enjoy the best of both worlds, within walking distance to Gateway Plaza and a ten minute drive to the coast, this ultra spacious family home has been designed for maximum interior enjoyment across a convenient single level. The low maintenance 400sqm (approx.) allotment benefits from close proximity to Estuary Boulevard Reserve, an open arena for sporting and soccer enthusiasts, children at play and fitness groups.

**Price:** \$650,000 - \$690,000

**Property Type:** House

**Land:** 400 m2

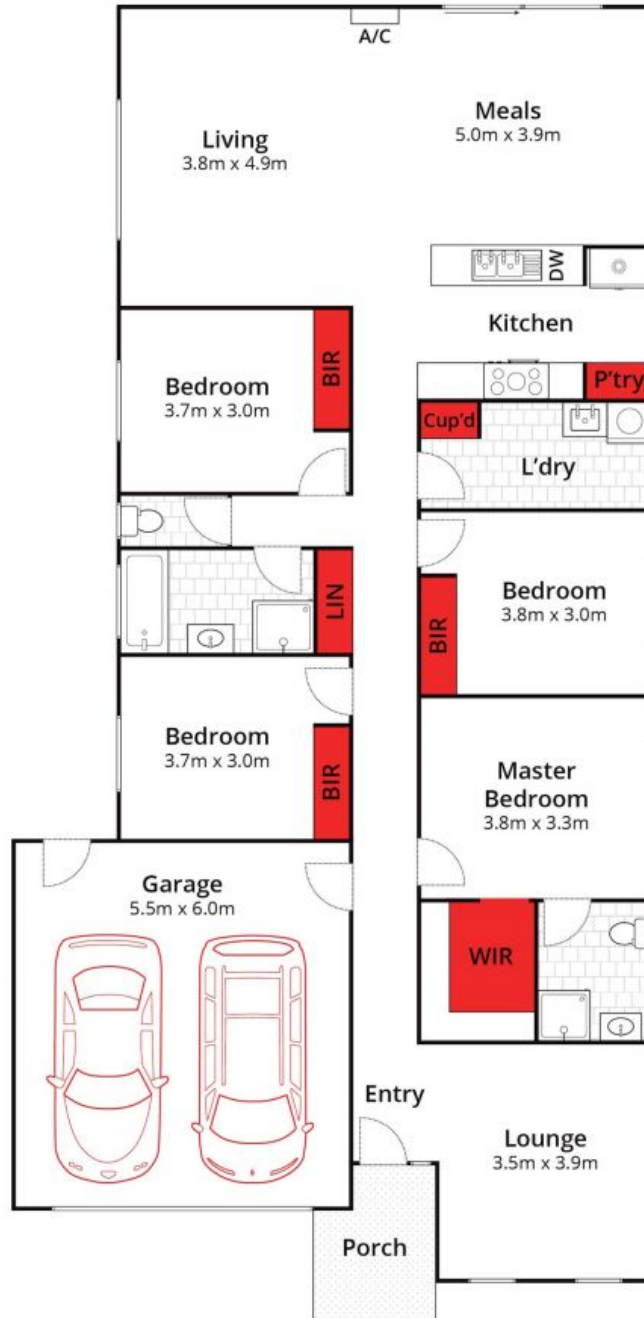
# HAYDEN

**David Pemberton** **Karen Purcell**

0419874029

0448510143

david@haydenleopold.com.au karenp@haydenleopold.com.au



Whilst [bwrn.com.au](http://bwrn.com.au) has made every attempt to ensure the accuracy of the floor plan contained here, measurements are approximate and no responsibility is taken for any error, omission, or mis-statement. This plan is for illustrative purposes only.



**19 Tispa Drive, Leopold**

**HAYDEN**

**19 Tispa Drive**

**LEOPOLD, VIC**