



10 Lorikeet Court LEOPOLD, VIC



3



2



2

Outstanding Family Haven In A Central Pocket

Sitting pretty on a large corner allotment in a wonderfully central location, this expansive three bedroom home presents in immaculate condition, ready for occupancy.

The master suite affords privacy to the front of the home, hosting a classically presented ensuite bathroom and walk-in robe. Two minor bedrooms occupy a separate wing, both with the luxury of walk-in robes and closeby placement to the brightly-lit main bathroom. A study/home office and second lounge complete this free flowing layout.

Setting you up for a lifestyle of ultimate convenience and maximum enjoyment, this location celebrates closeby placement to Lorikeet Reserve, playgrounds, The Bellarine Rail Trail, Gateway Plaza and preferred schools. The Geelong CBD is reachable in 15 minutes, and the beautiful beaches of Ocean Grove in 12 minutes. Public transport is easily accessible, also.

Price: \$810,000 - \$870,000
Inspect: Saturday, 18th May 2024 12:20 - 12:45
Property Type: House
Land: 694 m2

HAYDEN

Karen Purcell

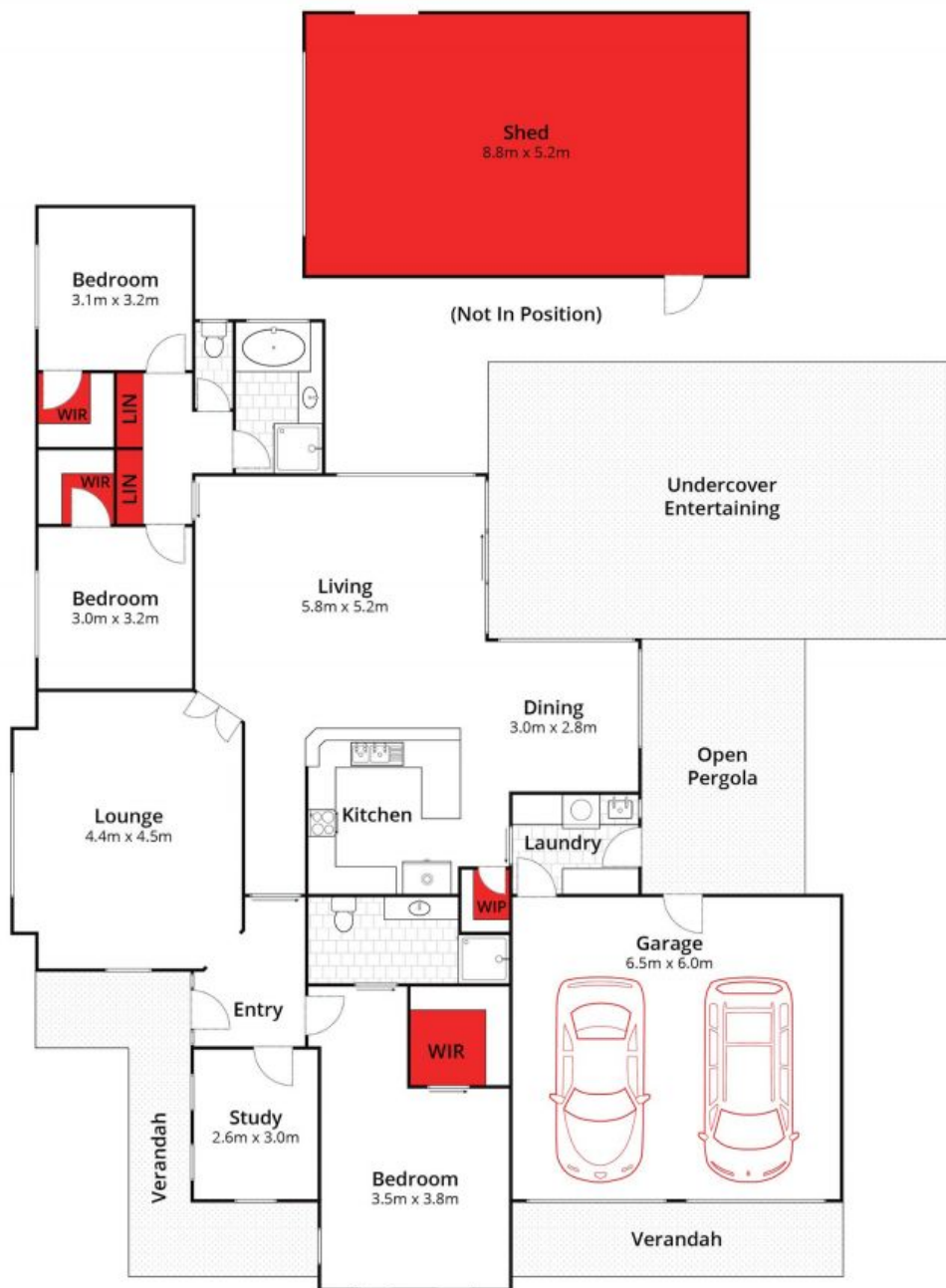
0448510143

karenp@haydenleopold.com.au

David Pemberton

0419874029

david@haydenleopold.com.au



Whilst bwrn.com.au has made every attempt to ensure the accuracy of the floor plan contained here, measurements are approximate and no responsibility is taken for any error, omission, or mis-statement. This plan is for illustrative purposes only.



10 Lorikeet Court, Leopold

HAYDEN

10 Lorikeet Court

LEOPOLD, VIC