



1/21 The Court LEOPOLD, VIC



3



2



2

Low-Maintenance Bliss In Leopold!

If style and quality are paramount in your next home, look no further than this low-maintenance abode! Whether you're a first homebuyer, downsizer, or astute investor, you'll need to act swiftly to secure this blissful lifestyle!

Price: \$575,000 - \$630,000
Inspect: Saturday, 4th May 2024 11:10 - 11:30
Property Type: House
Land: 293 m2

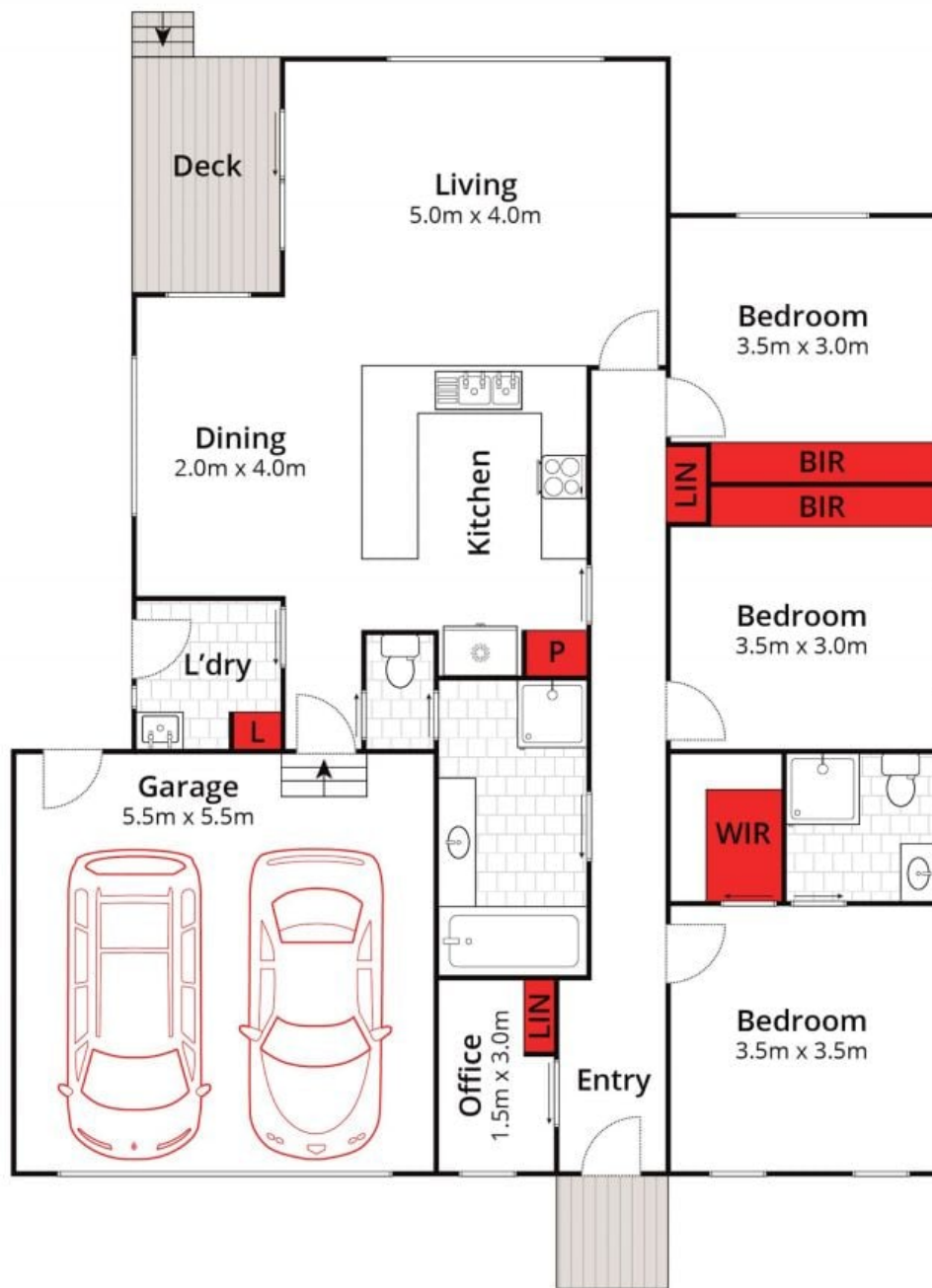
HAYDEN

David Pemberton **Karen Purcell**

0419874029

0448510143

david@haydenleopold.com.au karenp@haydenleopold.com.au



Whilst bwrn.com.au has made every attempt to ensure the accuracy of the floor plan contained here, measurements are approximate and no responsibility is taken for any error, omission, or mis-statement. This plan is for illustrative purposes only.



1/21 The Court, Leopold

HAYDEN

1/21 The Court

LEOPOLD, VIC