

4 Aurora Crescent TORQUAY, VIC



Church Estate Gem

Older style 3/4 bedroom brick veneer home located on a corner site of 639sqm in a quiet locality in a no through street. This is a great opportunity for first home buyers to invest and ?value add?.

Property in this select location, close to the main Torquay Sports and Recreation precinct, Spring Creek Reserve, Golf Club and Surf Club are becoming difficult to acquire. The lot size would appeal to builders as an opportunity to build a dual occupancy development (STCA.)

Price: \$1,100,000 - \$1,200,000
Property Type: House
Land: 639 m2



Kieran O'Dwyer

0409332381

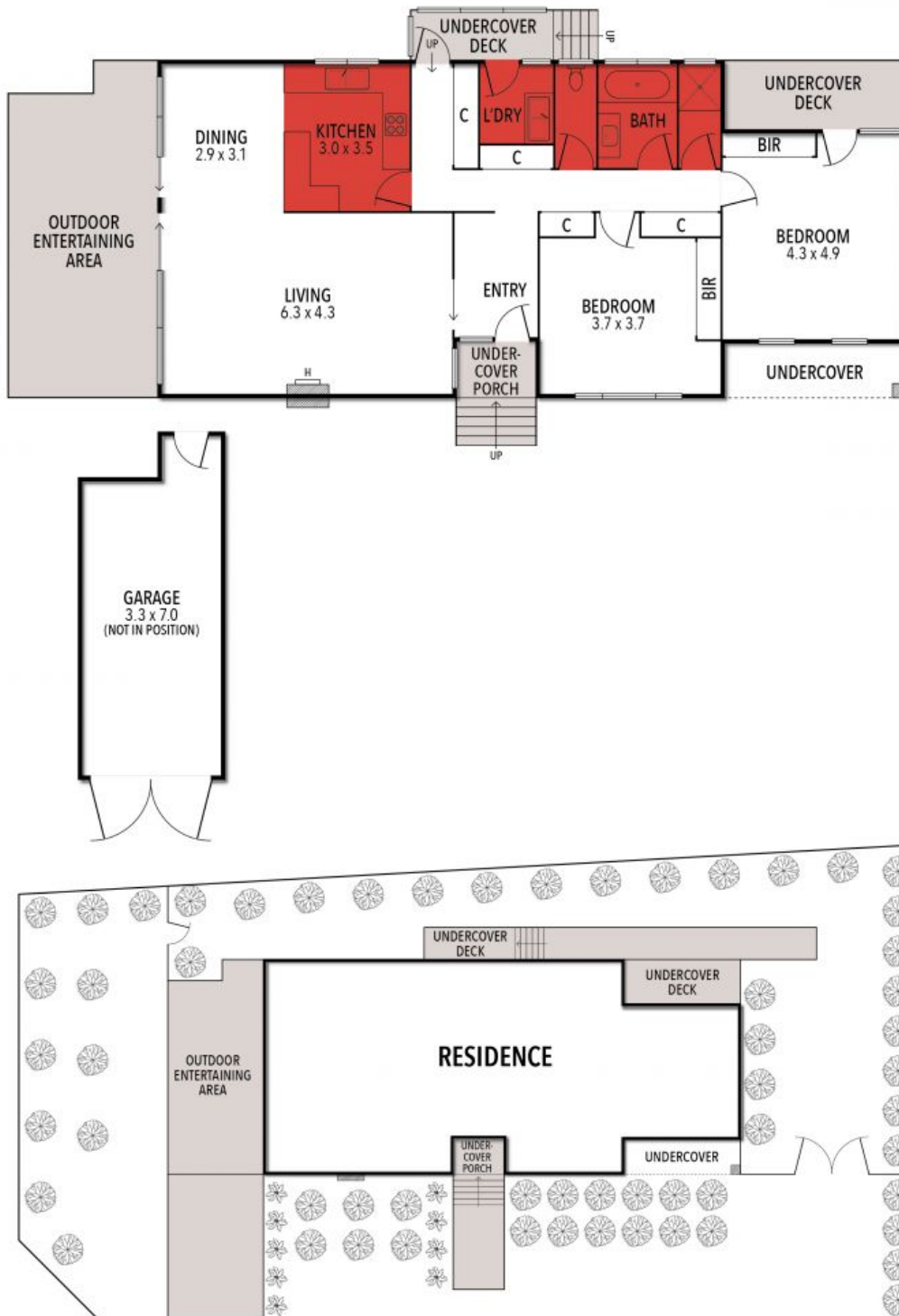
kierano@hayden.com.au

Ben Smith

0423050825

bens@hayden.com.au

4 AURORA CRESCENT, TORQUAY



THE ABOVE PLAN IS AN ARTIST'S IMPRESSION ONLY, IT INCLUDES ELEMENTS THAT ARE FOR DISPLAY PURPOSES ONLY AND MAY NOT BE TO SCALE. LANDSCAPING SHOWN IS INDICATIVE ONLY. DIMENSIONS ARE APPROXIMATE.