



61 Ash Road LEOPOLD, VIC



3



2



1

Potential Plus On Approx. 660m2!

Located a few doors down from the Ash Road shops, this original home presents a terrific opportunity on approx. 660m2. Whether you plan to renovate to create your dream family haven or explore the block's development potential, the rewards are endless (STCA).

Price: \$525,000 - \$550,000

Property Type: House

Land: 660 m2

HAYDEN

Karen Purcell

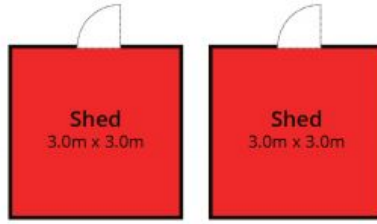
0448510143

karenp@haydenleopold.com.au

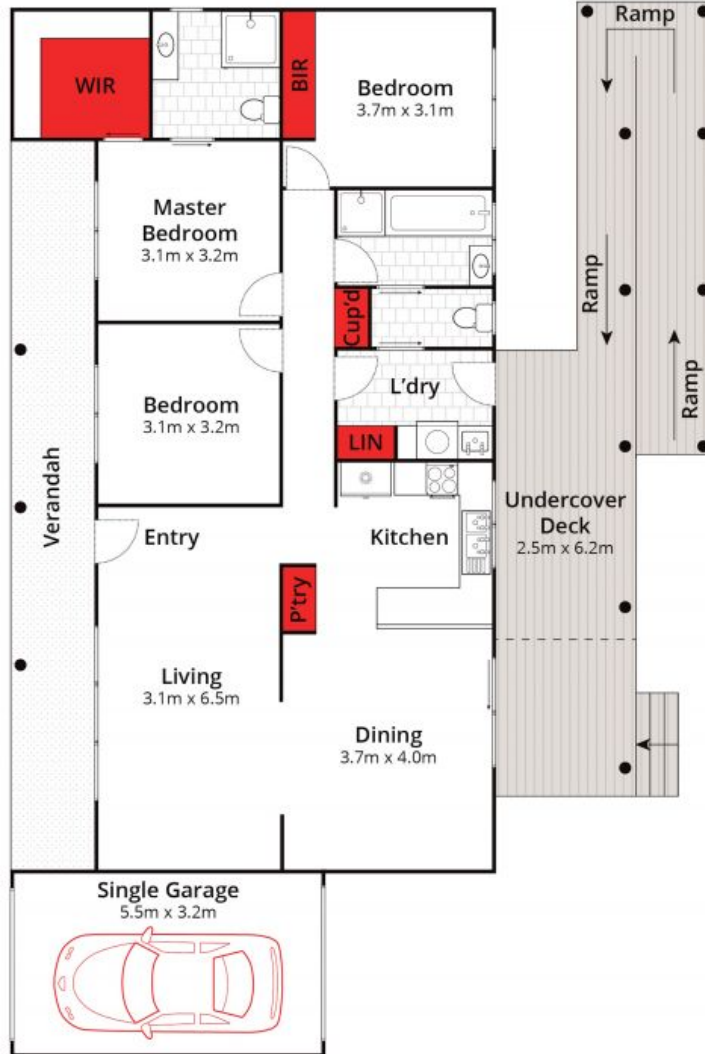
David Pemberton

0419874029

david@haydenleopold.com.au



(Not In Position)



Whilst bwrn.com.au has made every attempt to ensure the accuracy of the floor plan contained here, measurements are approximate and no responsibility is taken for any error, omission, or mis-statement. This plan is for illustrative purposes only.



61 Ash Road, Leopold

HAYDEN

61 Ash Road

LEOPOLD, VIC