



4 Mandlay Close LEOPOLD, VIC



4



2



2

## Timeless Elegance With Breath-taking Bay Views!

Graced with breath-taking bay views, this one-owner residence takes fine family living to a whole new level!

The kitchen is a true masterpiece with granite benchtops, a walk-in pantry and Miele appliances (dishwasher, wall oven, 5-burner gas cooktop, 900mm rangehood). The large island bench makes entertaining a breeze.

This peaceful location places you within walking distance to Leopold Primary School, the Leopold Community Hub and Dorothy Street shops. The Bellarine Rail Trail is close by for outdoor adventures, while the Gateway Plaza takes care of all your shopping needs. Just jump in the car, and you'll soon be exploring the delights of the Geelong CBD or Bellarine Pen

**Price:** \$890,000 - \$950,000

**Property Type:** House

**Land:** 705 m2

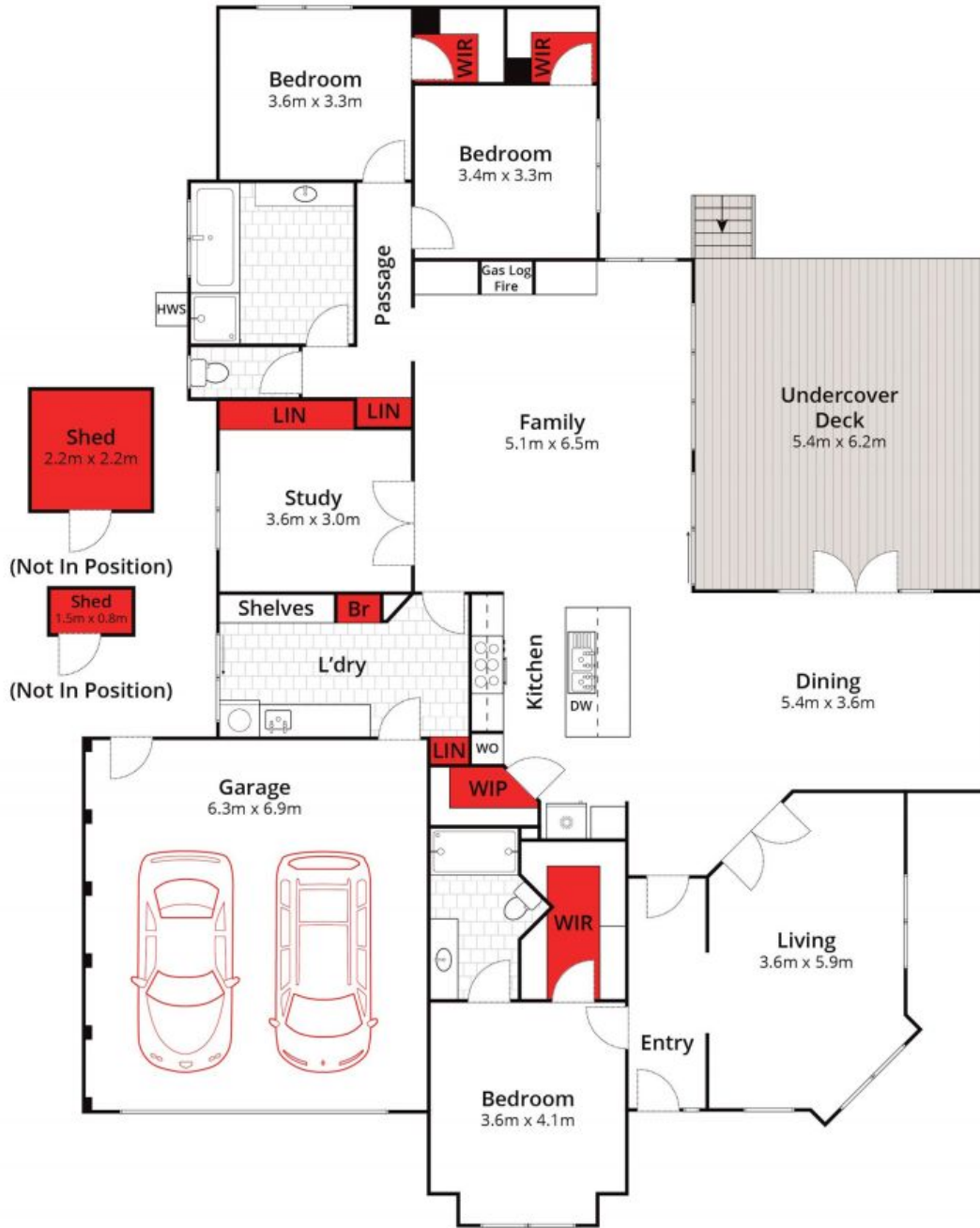
# HAYDEN

**David Pemberton** **Karen Purcell**

0419874029

0448510143

david@haydenleopold.com.au karenp@haydenleopold.com.au



Whilst [bwrn.com.au](http://bwrn.com.au) has made every attempt to ensure the accuracy of the floor plan contained here, measurements are approximate and no responsibility is taken for any error, omission, or mis-statement. This plan is for illustrative purposes only.



## 4 Mandlay Close, Leopold

**HAYDEN**